



**STARK WIE EIN STIER**

# RHOMBOID FAÇADE TILE 44 x 44 (PREFA)

CAD DETAILS

## CONTENTS:

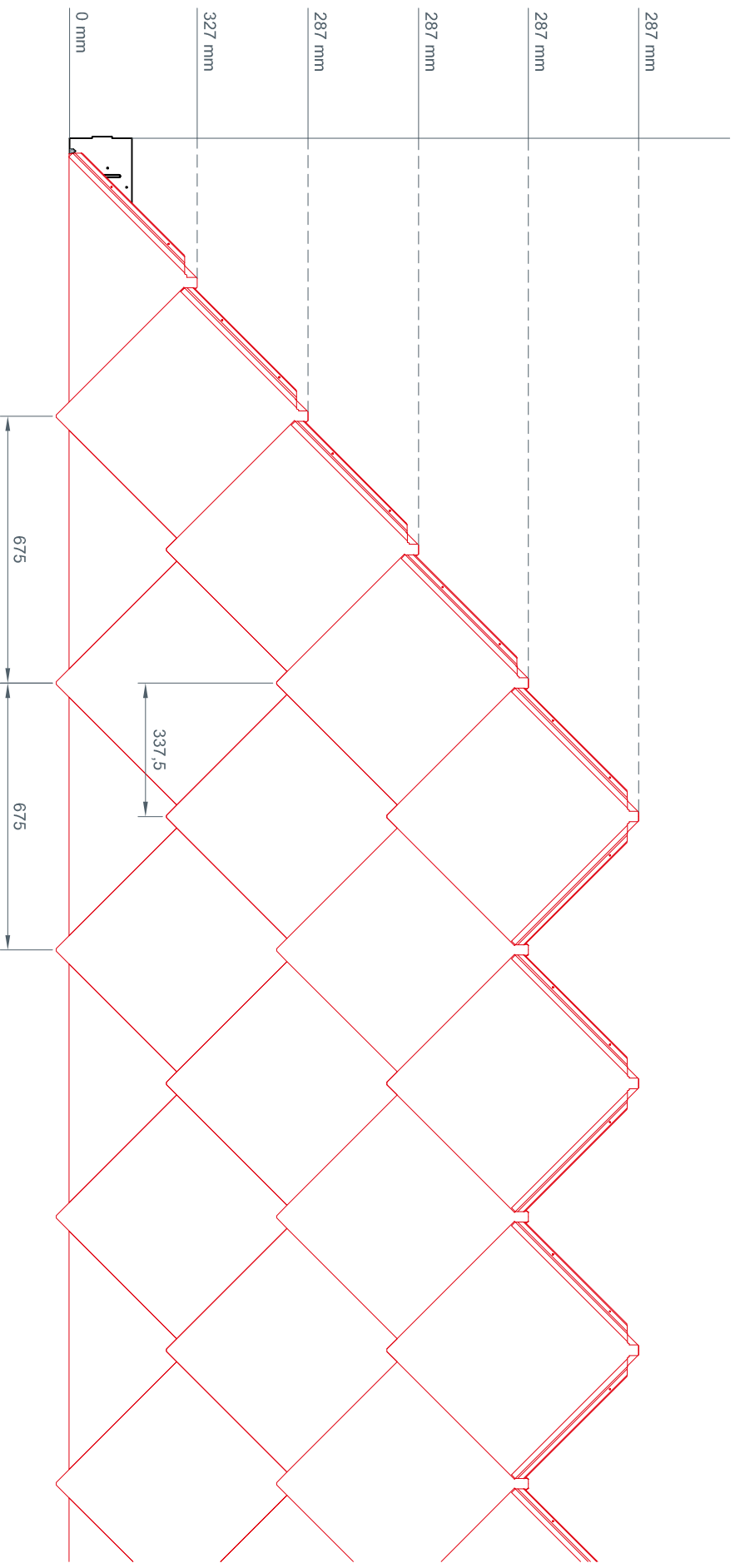
- 2 detailed view – line spacing
- 3 vertical cross-section – structure
- 4 vertical cross-section – bottom connection
- 5 horizontal cross-section – external corner
- 6 horizontal cross-section – internal corner
- 7 vertical cross-section – window ledge
- 8 horizontal cross-section – window reveals
- 9 vertical cross-section – window lintel
- 10 vertical cross-section – top connection
- 11 vertical cross-section – roof parapet



STARK WIE EIN STIER

# line spacing detailed view RHOMBOID FAÇADE TILE 44 X 44 (PREFA)

CAD DETAILS

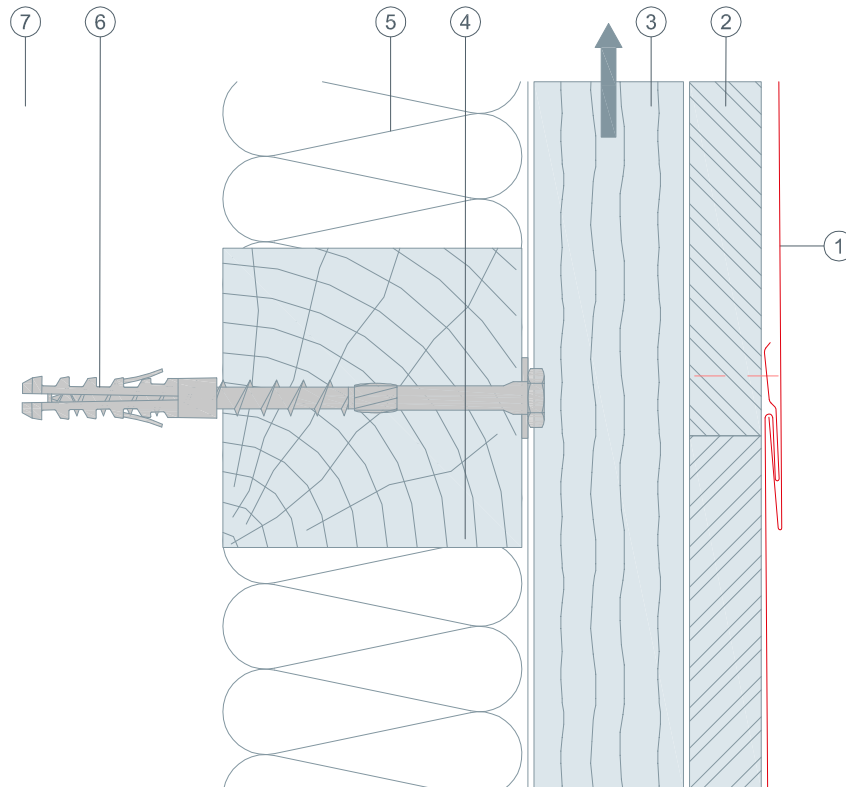




STARK WIE EIN STIER

# structure vertical cross-section RHOMBOID FAÇADE TILE 44 x 44 (PREFA)

## CAD DETAILS



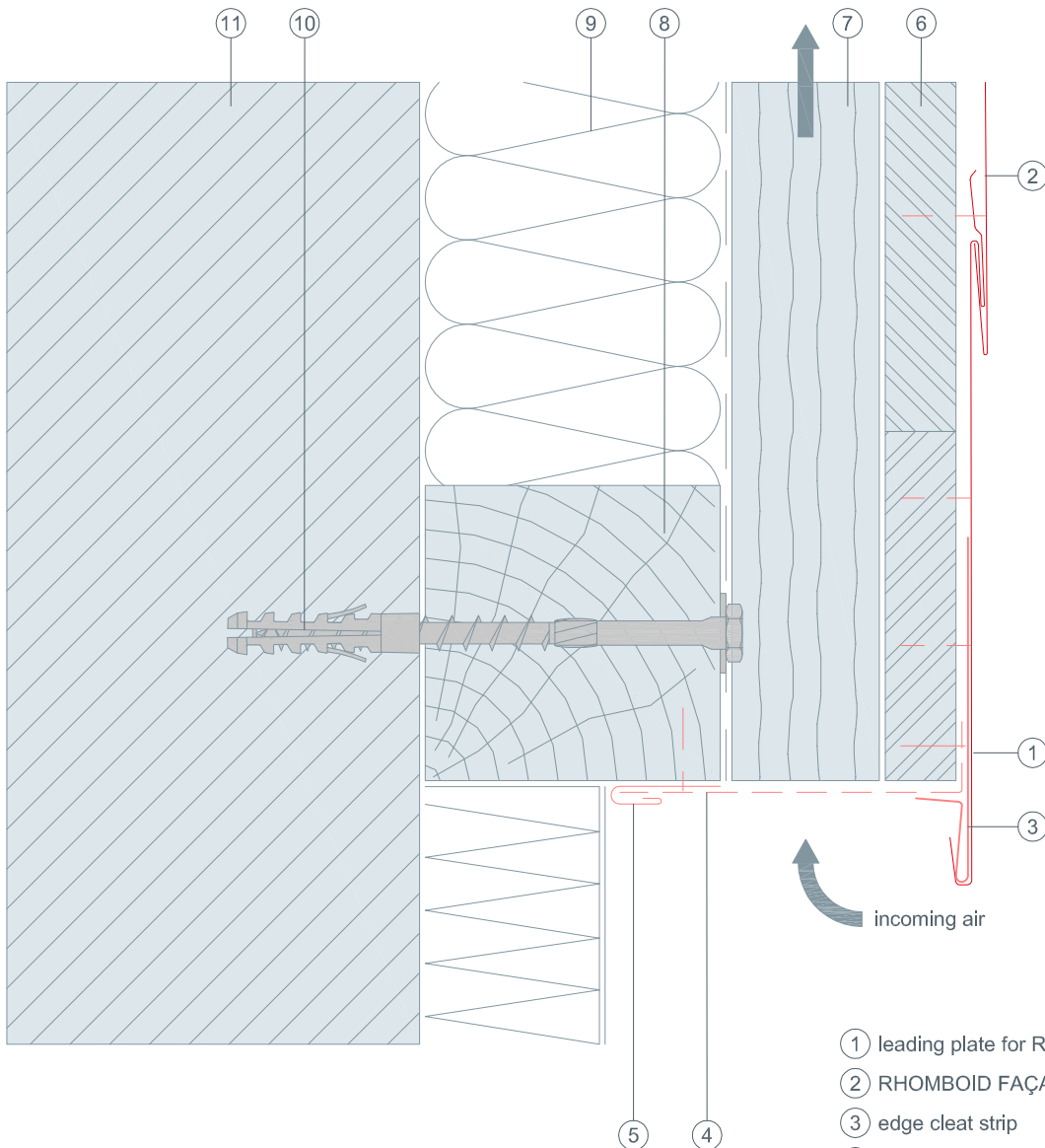
- ① RHOMBOID FAÇADE TILE 44 x 44 (PREFA)
- ② solid sheathing conforming to national guidelines
- ③ counter batten - ventilation gap
- ④ nogging piece
- ⑤ insulation
- ⑥ fastener driven into the supporting structure
- ⑦ structural substrate



STARK WIE EIN STIER

# bottom connection vertical cross-section RHOMBOID FAÇADE TILE 44 x 44 (PREFA)

CAD DETAILS



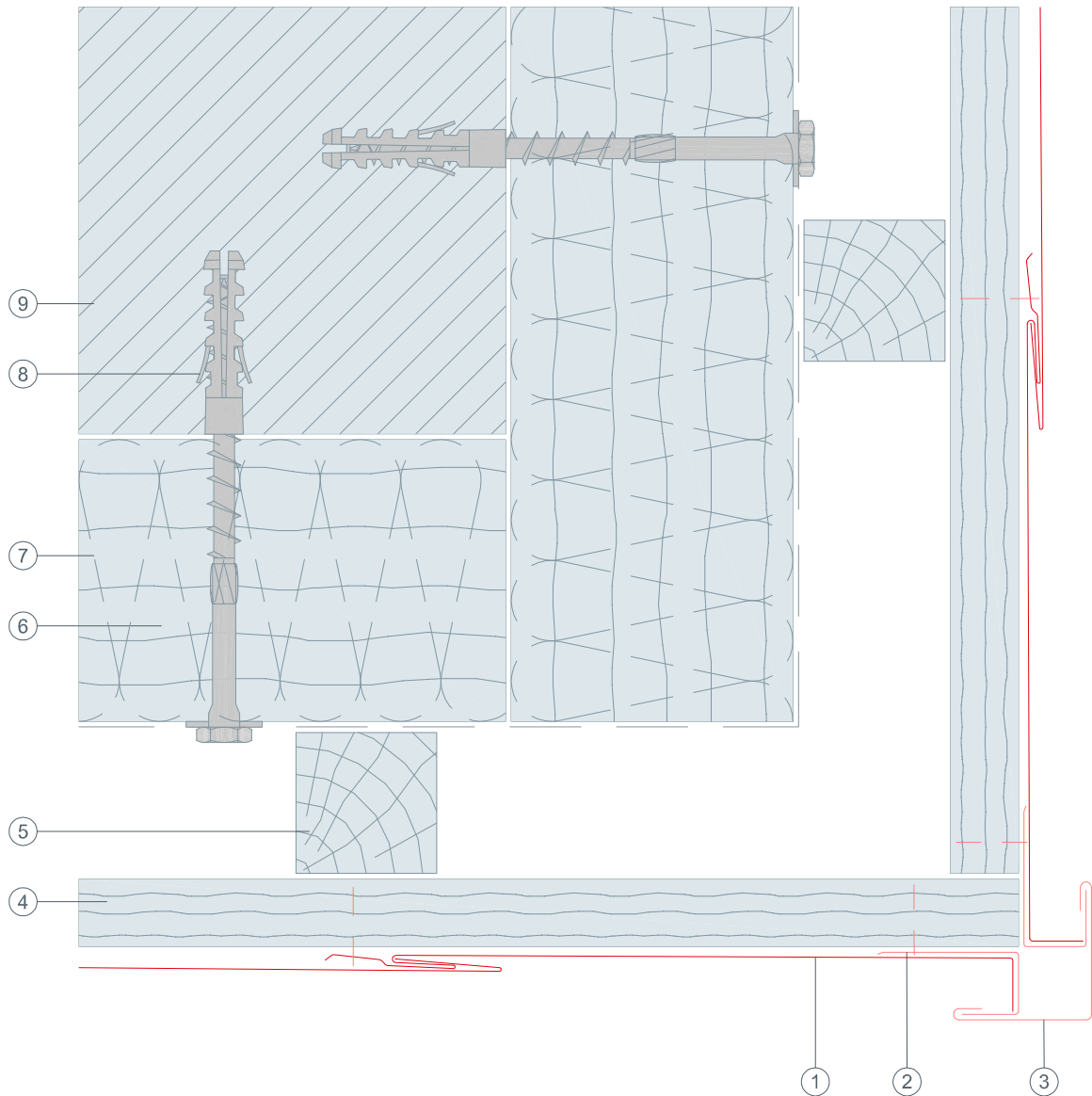
- ① leading plate for RHOMBOID FAÇADE TILE 44 x 44 (PREFA)
- ② RHOMBOID FAÇADE TILE 44 x 44 (PREFA)
- ③ edge cleat strip
- ④ perforated metal plate (canted)
- ⑤ insertion profile (PREFA)
- ⑥ solid sheathing conforming to national guidelines
- ⑦ counter batten - ventilation gap
- ⑧ nogging piece
- ⑨ insulation
- ⑩ fastener driven into the supporting structure
- ⑪ structural substrate



STARK WIE EIN STIER

# external corner horizontal cross-section RHOMBOID FAÇADE TILE 44 x 44 (PREFA)

## CAD DETAILS



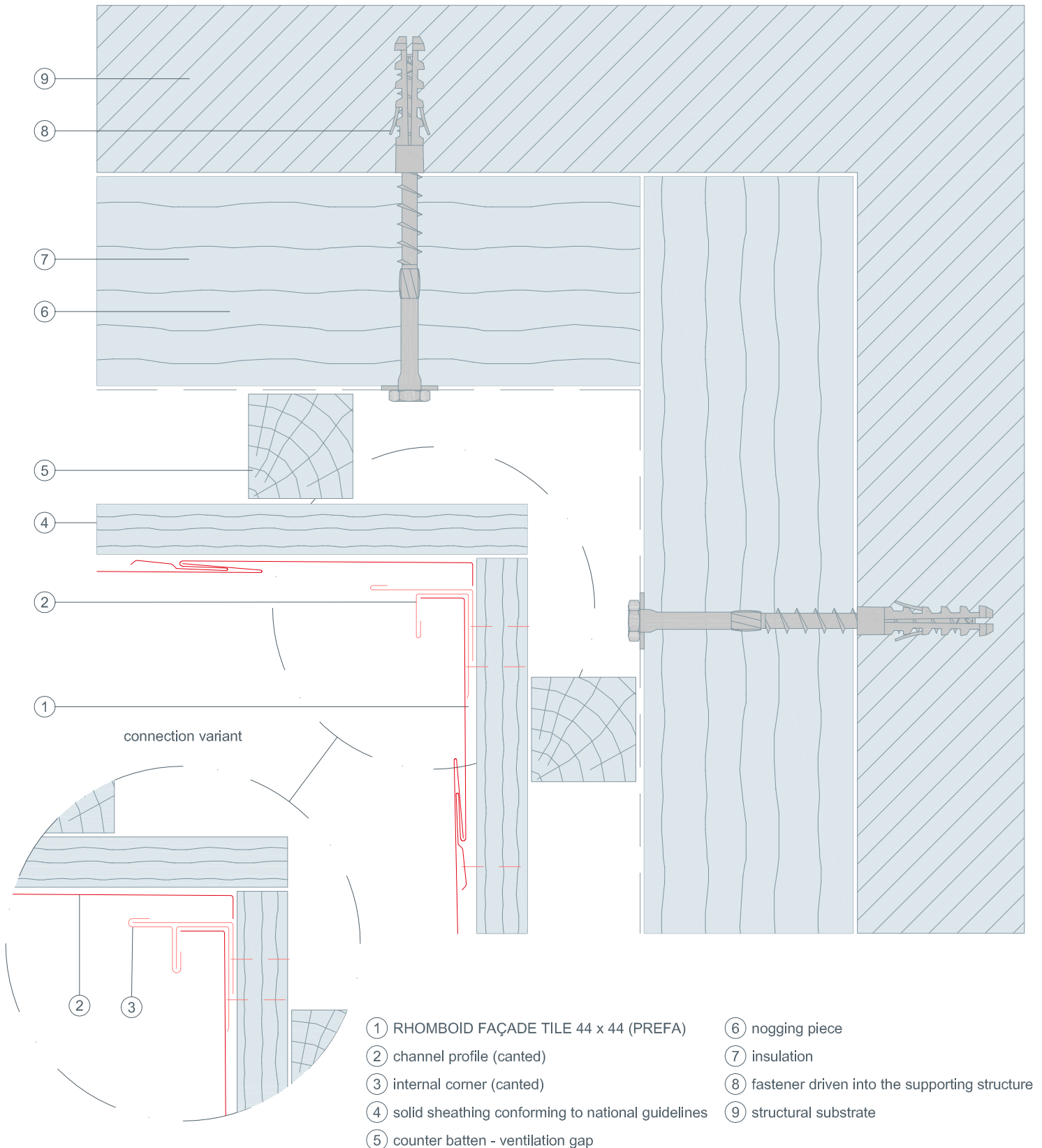
- ① RHOMBOID FAÇADE TILE 44 x 44 (PREFA)
- ② channel profile (canted)
- ③ external corner flashing
- ④ solid sheathing conforming to national guidelines
- ⑤ counter batten - ventilation gap
- ⑥ nogging piece
- ⑦ insulation
- ⑧ fastener driven into the supporting structure
- ⑨ structural substrate



STARK WIE EIN STIER

# internal corner horizontal cross-section RHOMBOID FAÇADE TILE 44 x 44 (PREFA)

## CAD DETAILS



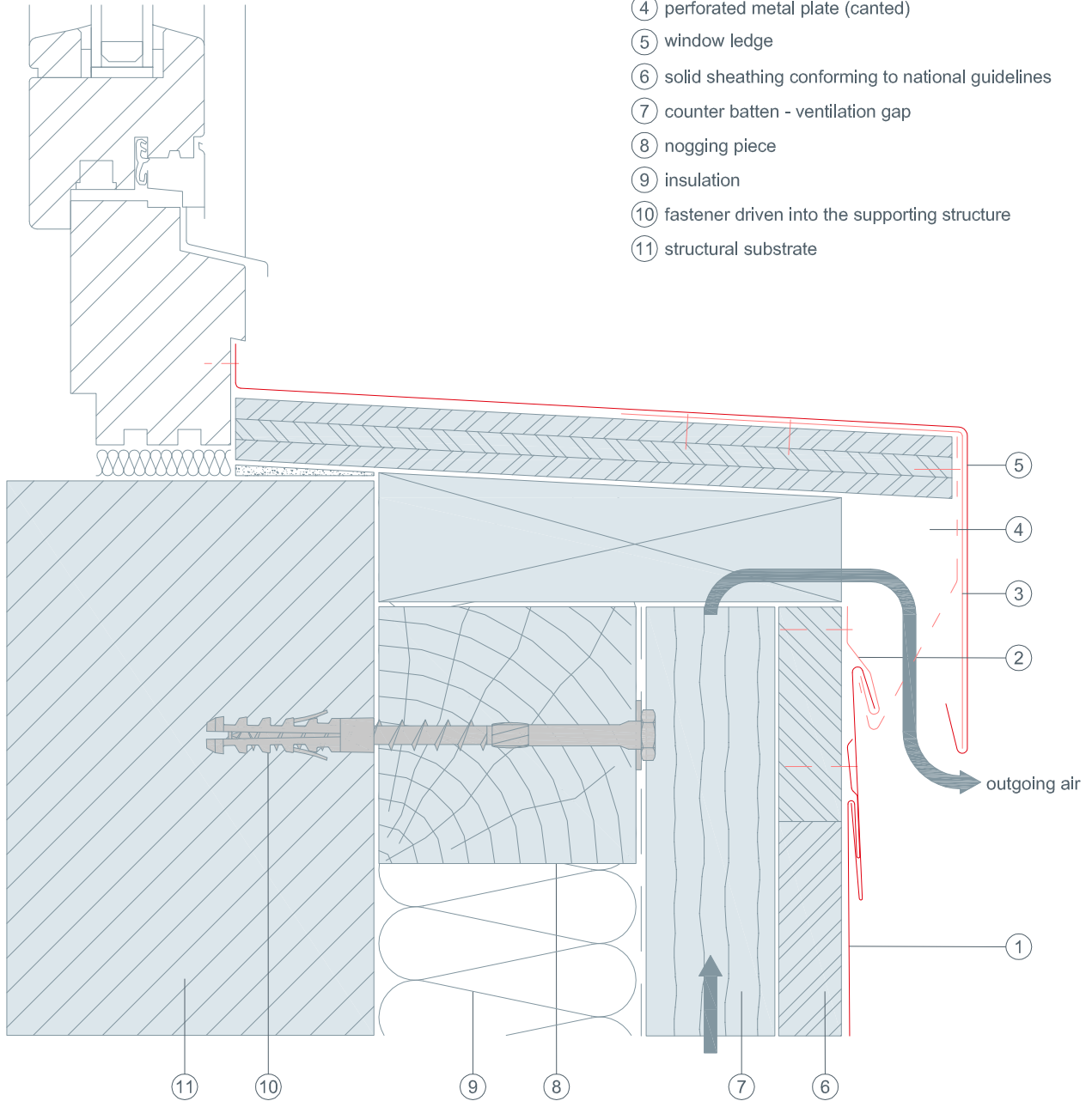


STARK WIE EIN STIER

# vertical cross-section RHOMBOID FAÇADE TILE 44 x 44 (PREFA)

## CAD DETAILS

- ① RHOMBOID FAÇADE TILE 44 x 44 (PREFA)
- ② clips
- ③ continuous pre-formed supporting flashing strip
- ④ perforated metal plate (canted)
- ⑤ window ledge
- ⑥ solid sheathing conforming to national guidelines
- ⑦ counter batten - ventilation gap
- ⑧ nogging piece
- ⑨ insulation
- ⑩ fastener driven into the supporting structure
- ⑪ structural substrate

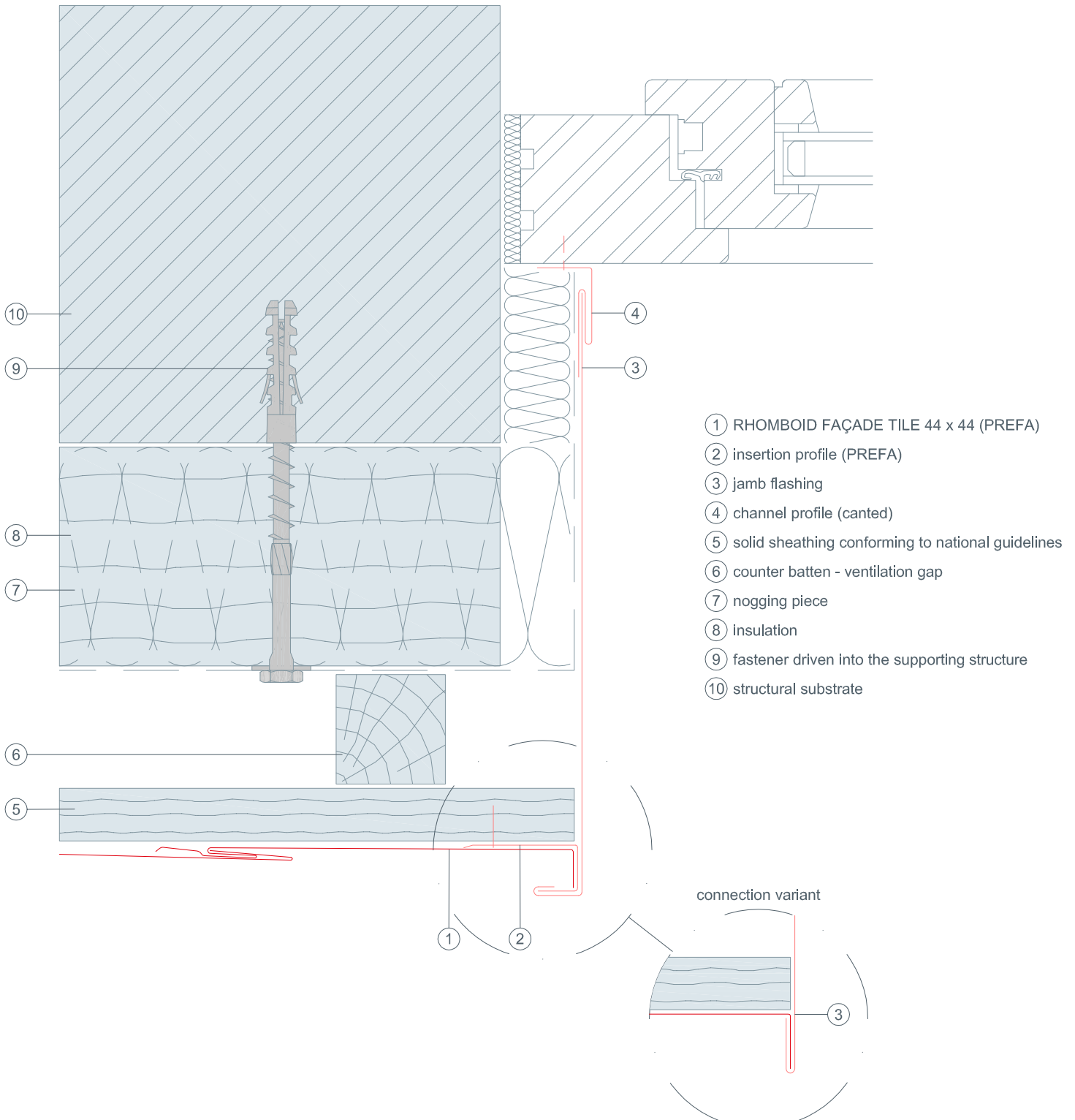




STARK WIE EIN STIER

# window reveals horizontal cross-section RHOMBOID FAÇADE TILE 44 x 44 (PREFA)

## CAD DETAILS



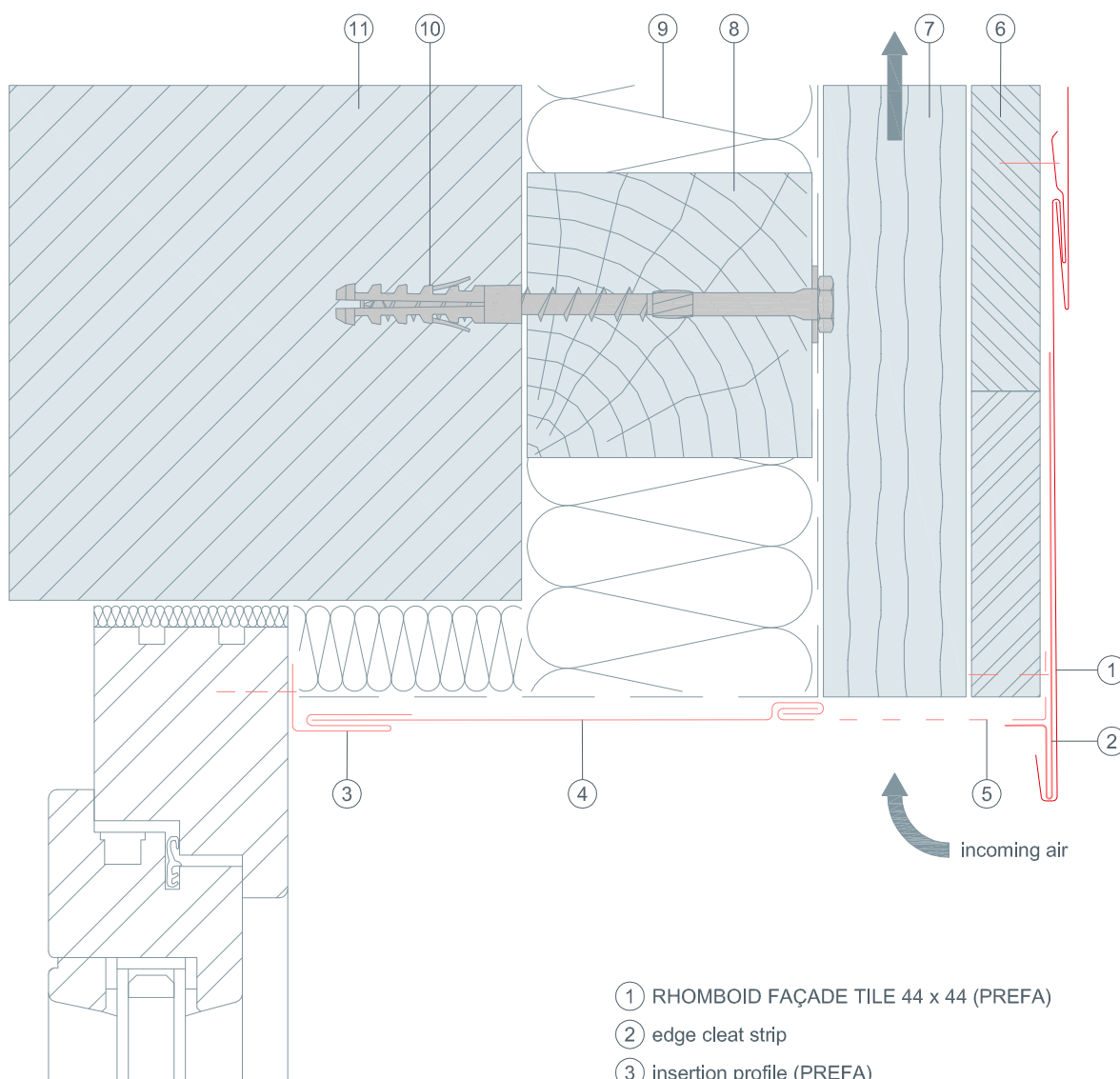




STARK WIE EIN STIER

# window lintel vertical cross-section RHOMBOID FAÇADE TILE 44 x 44 (PREFA)

## CAD DETAILS



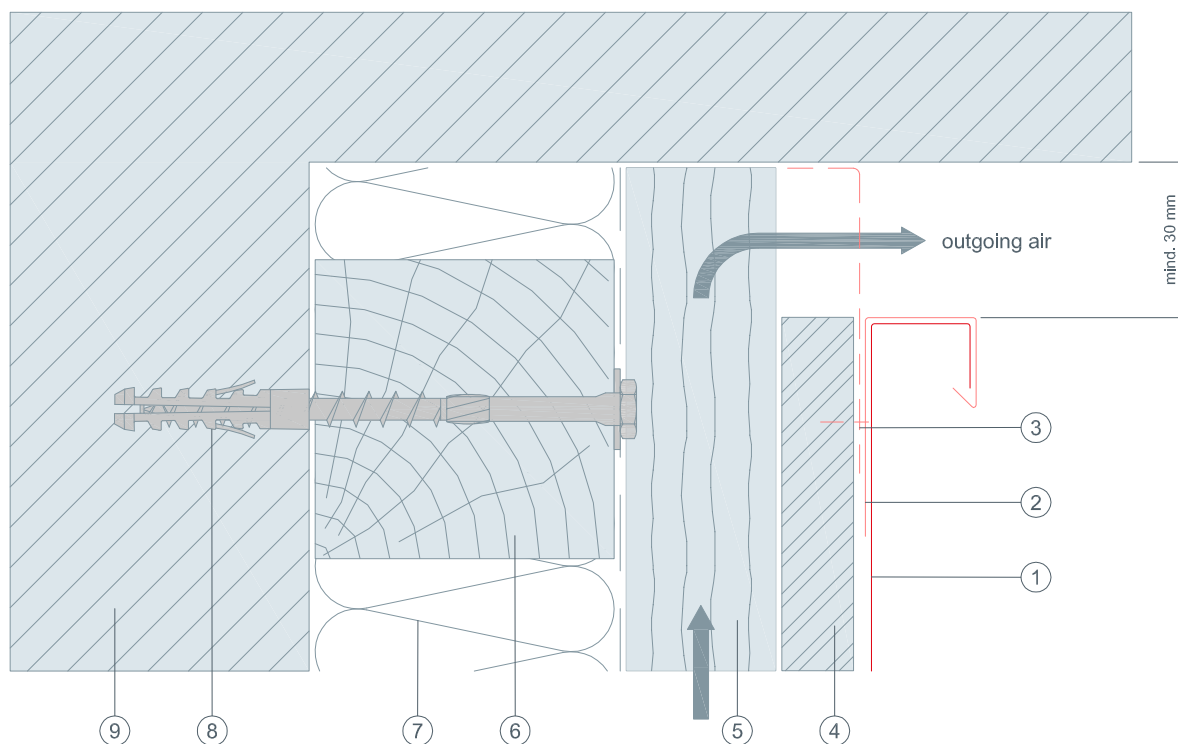
- ① RHOMBOID FAÇADE TILE 44 x 44 (PREFA)
- ② edge cleat strip
- ③ insertion profile (PREFA)
- ④ cover flashing
- ⑤ perforated metal plate (canted)
- ⑥ solid sheathing conforming to national guidelines
- ⑦ counter batten - ventilation gap
- ⑧ nogging piece
- ⑨ insulation
- ⑩ fastener driven into the supporting structure
- ⑪ structural substrate



STARK WIE EIN STIER

# top connection vertical cross-section RHOMBOID FAÇADE TILE 44 x 44 (PREFA)

## CAD DETAILS



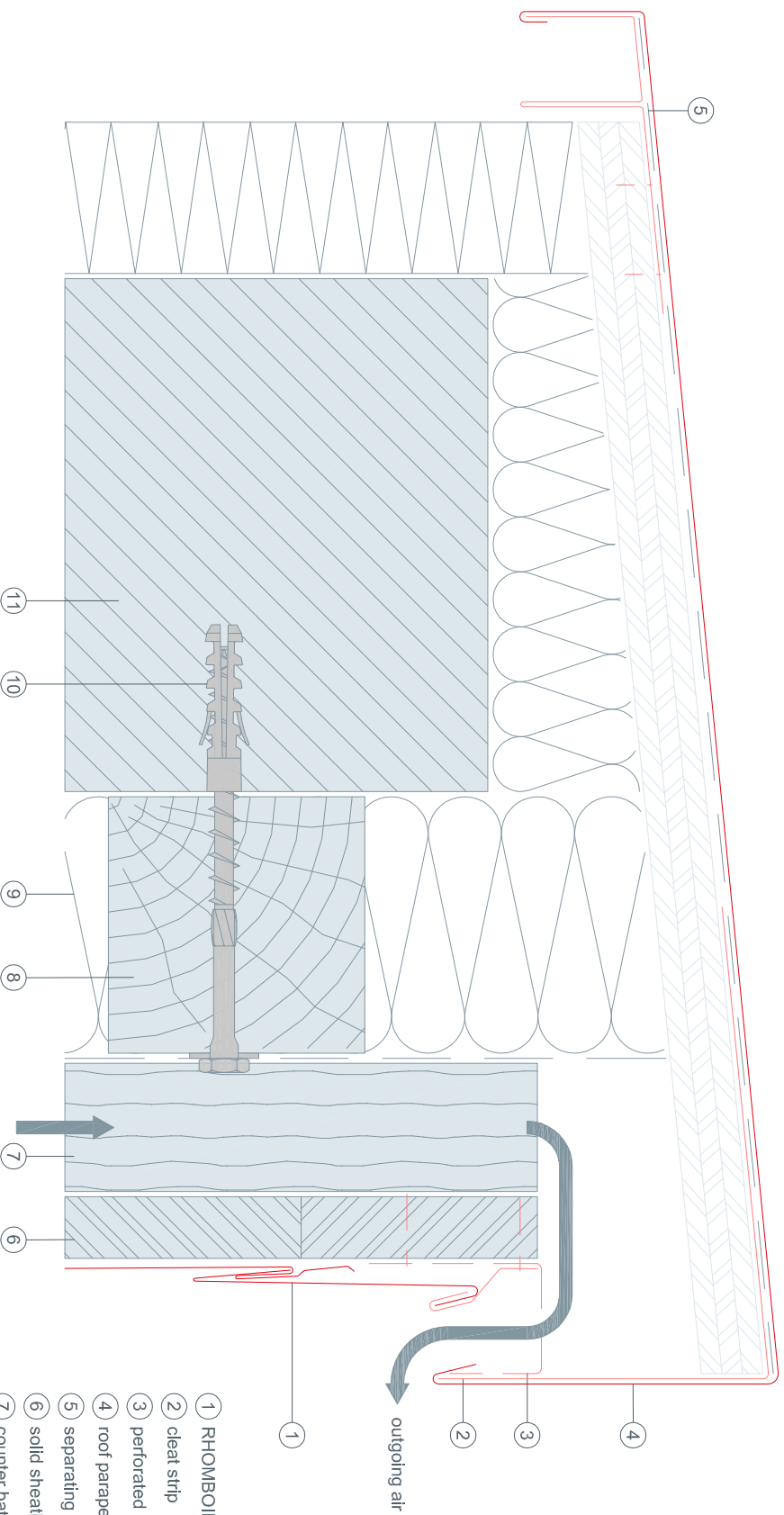
- ① RHOMBOID FAÇADE TILE 44 x 44 (PREFA)
- ② channel profile (canted)
- ③ perforated metal plate (canted)
- ④ solid sheathing conforming to national guidelines
- ⑤ counter batten - ventilation gap
- ⑥ nogging piece
- ⑦ insulation
- ⑧ fastener driven into the supporting structure
- ⑨ structural substrate



STARK WIE EIN STIER

# roof parapet vertical cross-section RHOMBOID FAÇADE TILE 44 X 44 (PREFA)

CAD DETAILS



- ① RHOMBOID FAÇADE TILE 44 x 44 (PREFA)
- ② cleat strip
- ③ perforated metal plate (canted)
- ④ roof parapet flashing
- ⑤ separating layer
- ⑥ solid sheathing conforming to national guidelines
- ⑦ counter batten - ventilation gap
- ⑧ nogging piece
- ⑨ insulation
- ⑩ fastener driven into the supporting structure
- ⑪ structural substrate



**STARK WIE EIN STIER**

# RHOMBOID FAÇADE TILE 44 x 44 (PREFA)

CAD DETAILS

## CONTENTS:

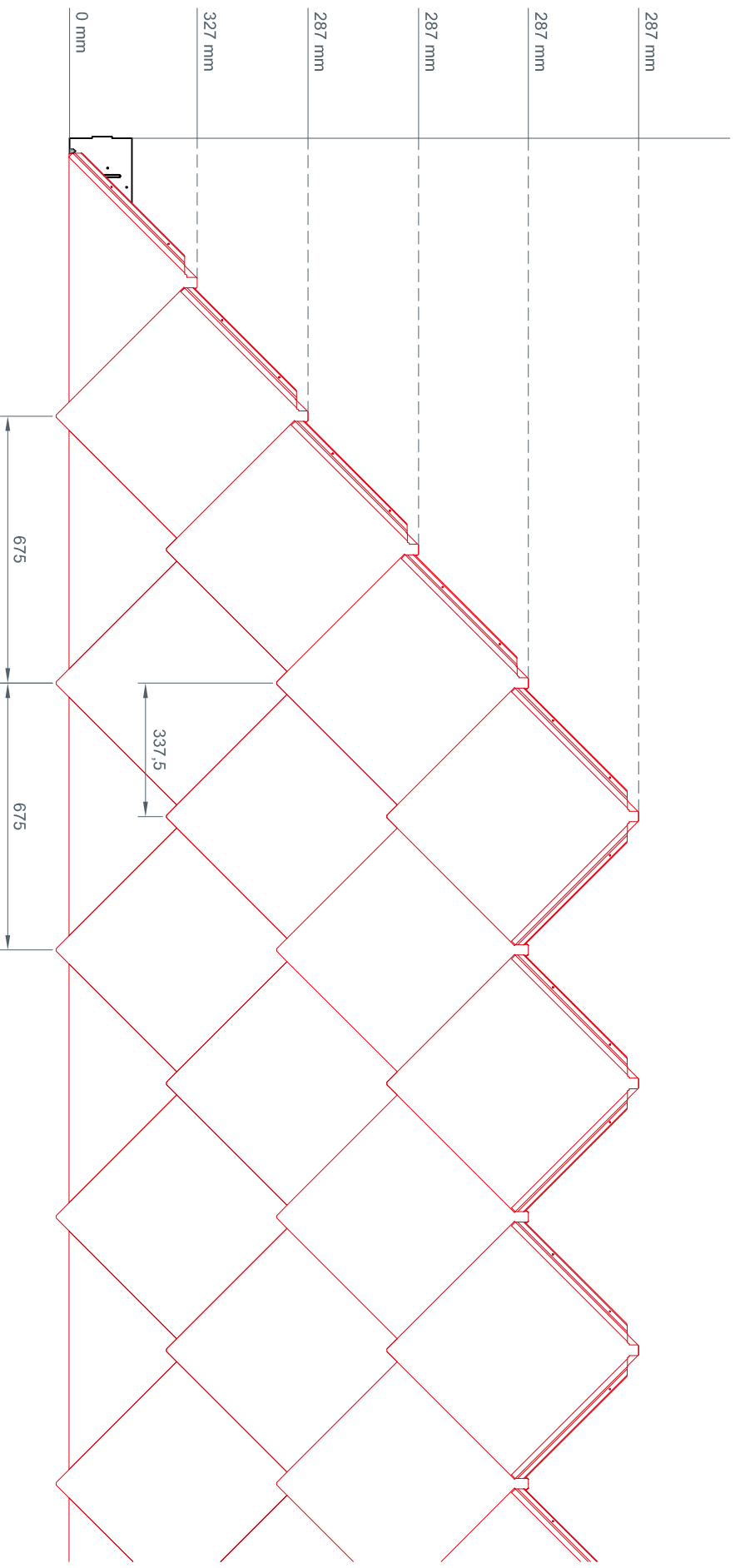
- 13 detailed view – line spacing
- 14 vertical cross-section – structure
- 15 vertical cross-section – bottom connection
- 16 horizontal cross-section – external corner
- 17 horizontal cross-section – internal corner
- 18 vertical cross-section – window ledge
- 19 horizontal cross-section – window reveals
- 20 vertical cross-section – window lintel
- 21 vertical cross-section – top connection
- 22 vertical cross-section – roof parapet



STARK WIE EIN STIER

# line spacing detailed view RHOMBOID FAÇADE TILE 44 X 44 (PREFA)

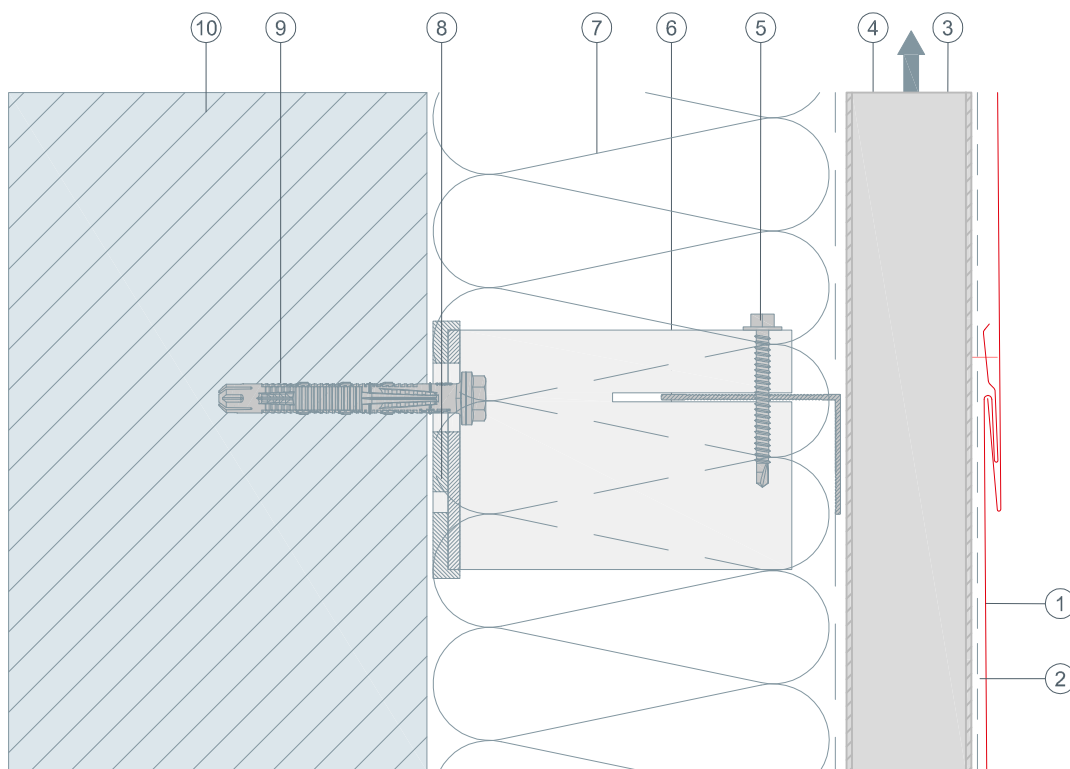
CAD DETAILS





STARK WIE EIN STIER

# structure vertical cross-section RHOMBOID FAÇADE TILE 44 x 44 (PREFA)

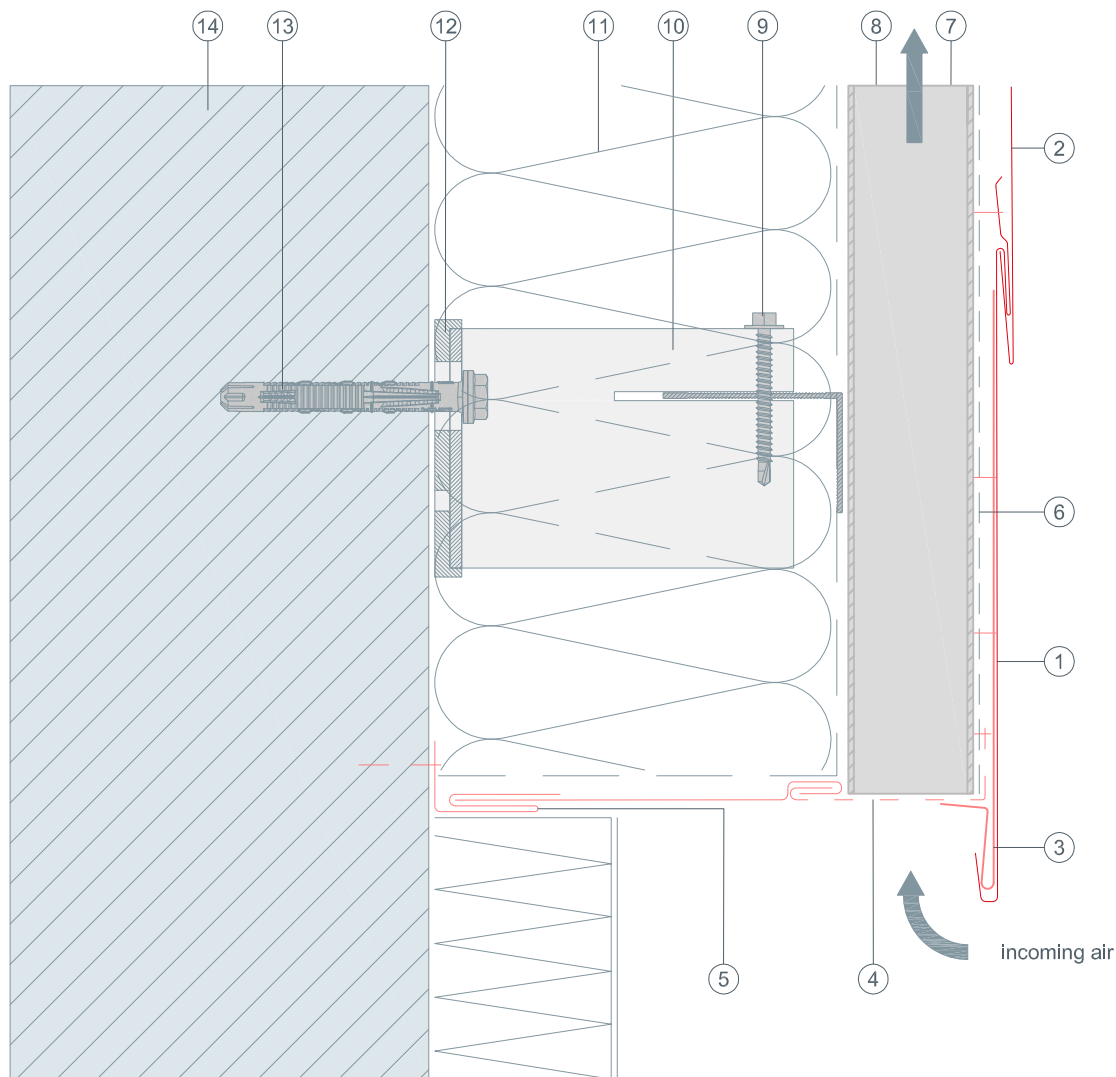


- ① RHOMBOID FAÇADE TILE 44 x 44 (PREFA)
- ② separating layer
- ③ trapezoidal sheet
- ④ ventilation gap
- ⑤ connection screw
- ⑥ spacer bracket
- ⑦ insulation
- ⑧ thermal break
- ⑨ fastener driven into the supporting structure
- ⑩ structure substrate



STARK WIE EIN STIER

# bottom connection vertical cross-section RHOMBOID FAÇADE TILE 44 x 44 (PREFA)

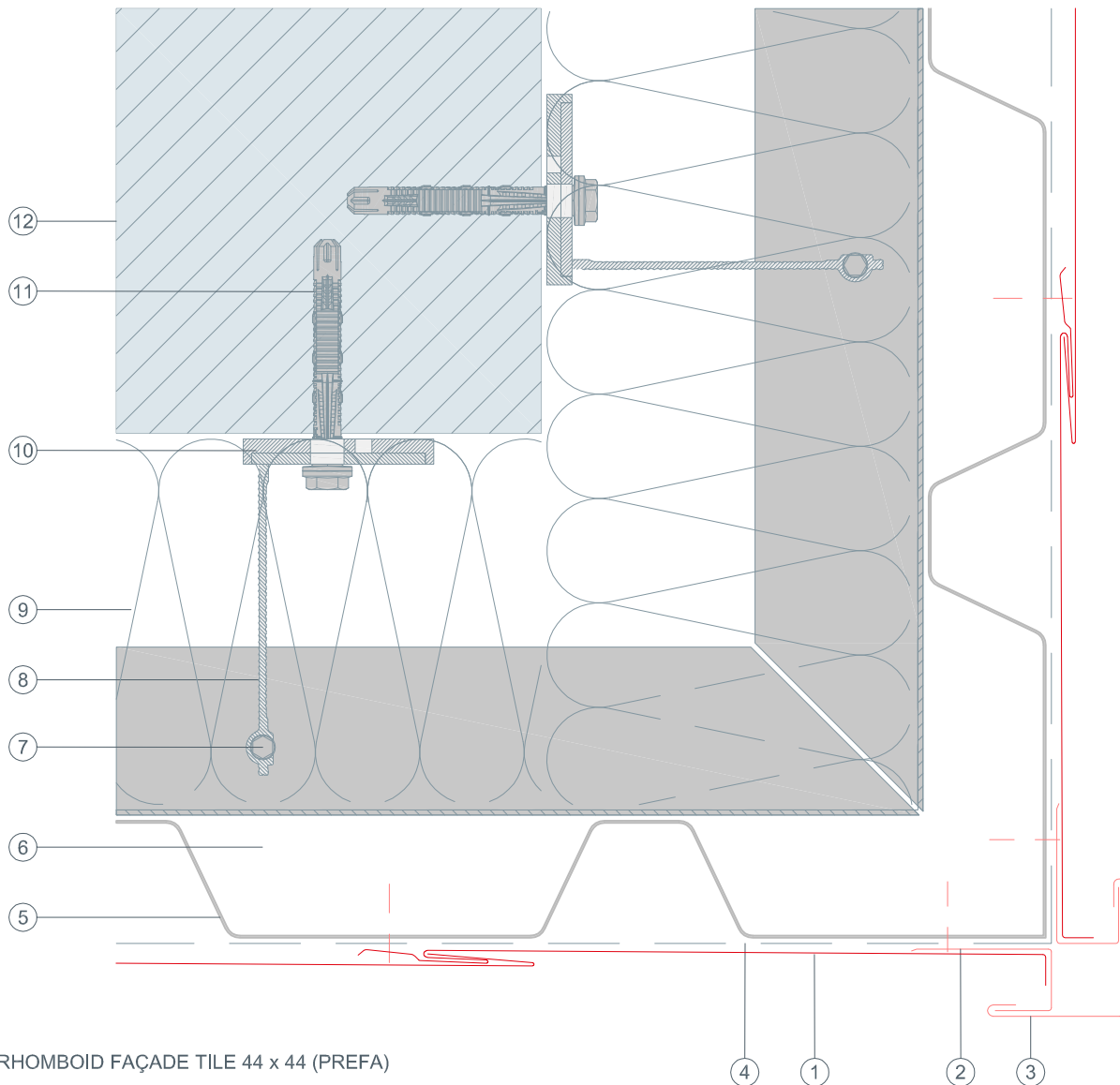


- ① leading plate for RHOMBOID FAÇADE TILE 44 x 44 (PREFA)
- ② RHOMBOID FAÇADE TILE 44 x 44 (PREFA)
- ③ edge cleat strip
- ④ perforated metal plate (canted)
- ⑤ insertion profile (PREFA)
- ⑥ separating layer
- ⑦ trapezoidal sheet
- ⑧ ventilation gap
- ⑨ connection screw
- ⑩ spacer bracket
- ⑪ insulation
- ⑫ thermal break
- ⑬ fastener driven into the supporting structure
- ⑭ structural substrate



STARK WIE EIN STIER

# external corner horizontal cross-section RHOMBOID FAÇADE TILE 44 x 44 (PREFA)



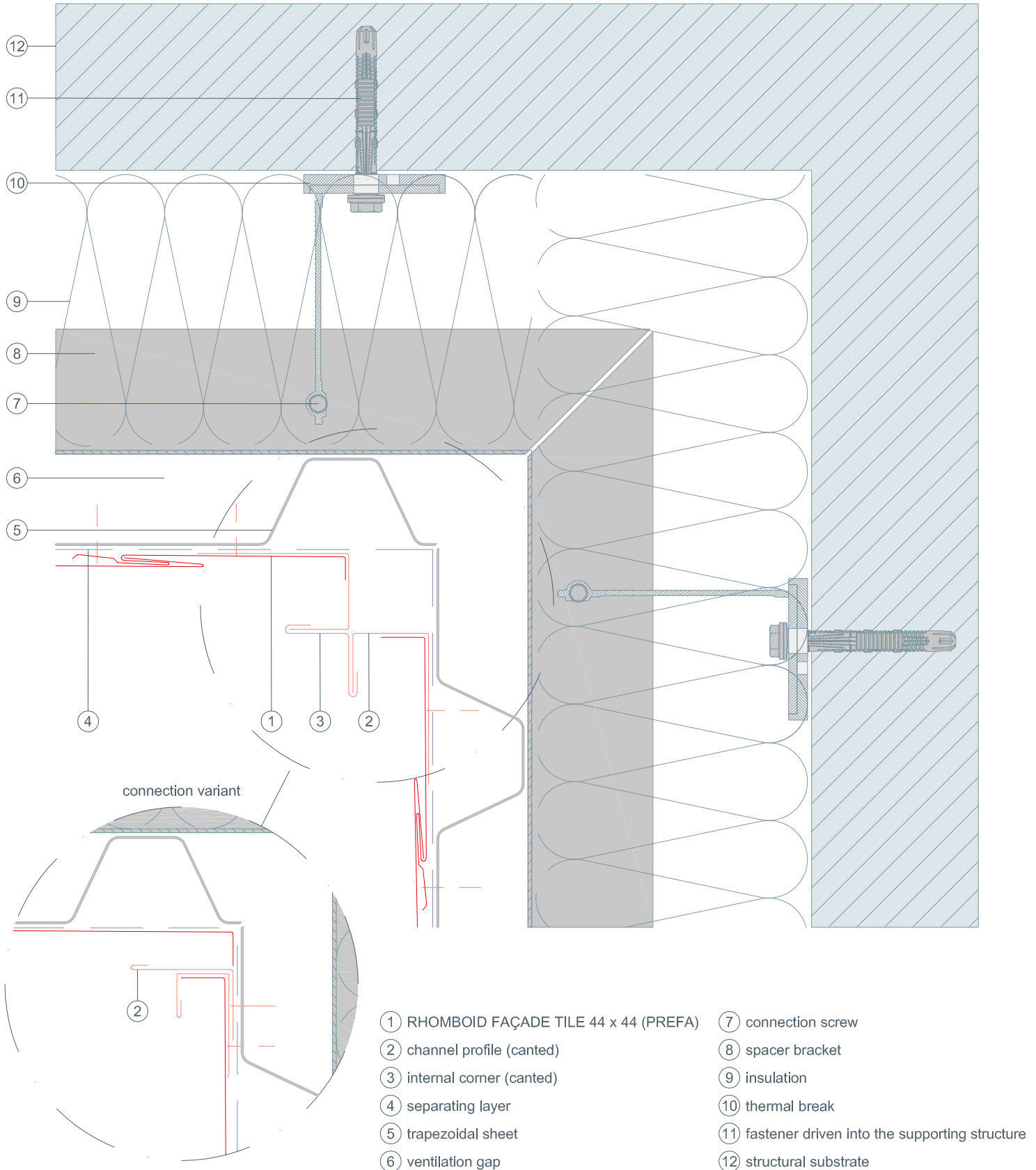
- ① RHOMBOID FAÇADE TILE 44 x 44 (PREFA)
- ② channel profile (canted)
- ③ external corner flashing
- ④ separating layer
- ⑤ trapezoidal sheet
- ⑥ ventilation gap
- ⑦ connection screw
- ⑧ spacer bracket
- ⑨ insulation
- ⑩ thermal break
- ⑪ fastener driven into the supporting structure
- ⑫ structural substrate





STARK WIE EIN STIER

# internal corner horizontal cross-section RHOMBOID FAÇADE TILE 44 x 44 (PREFA)

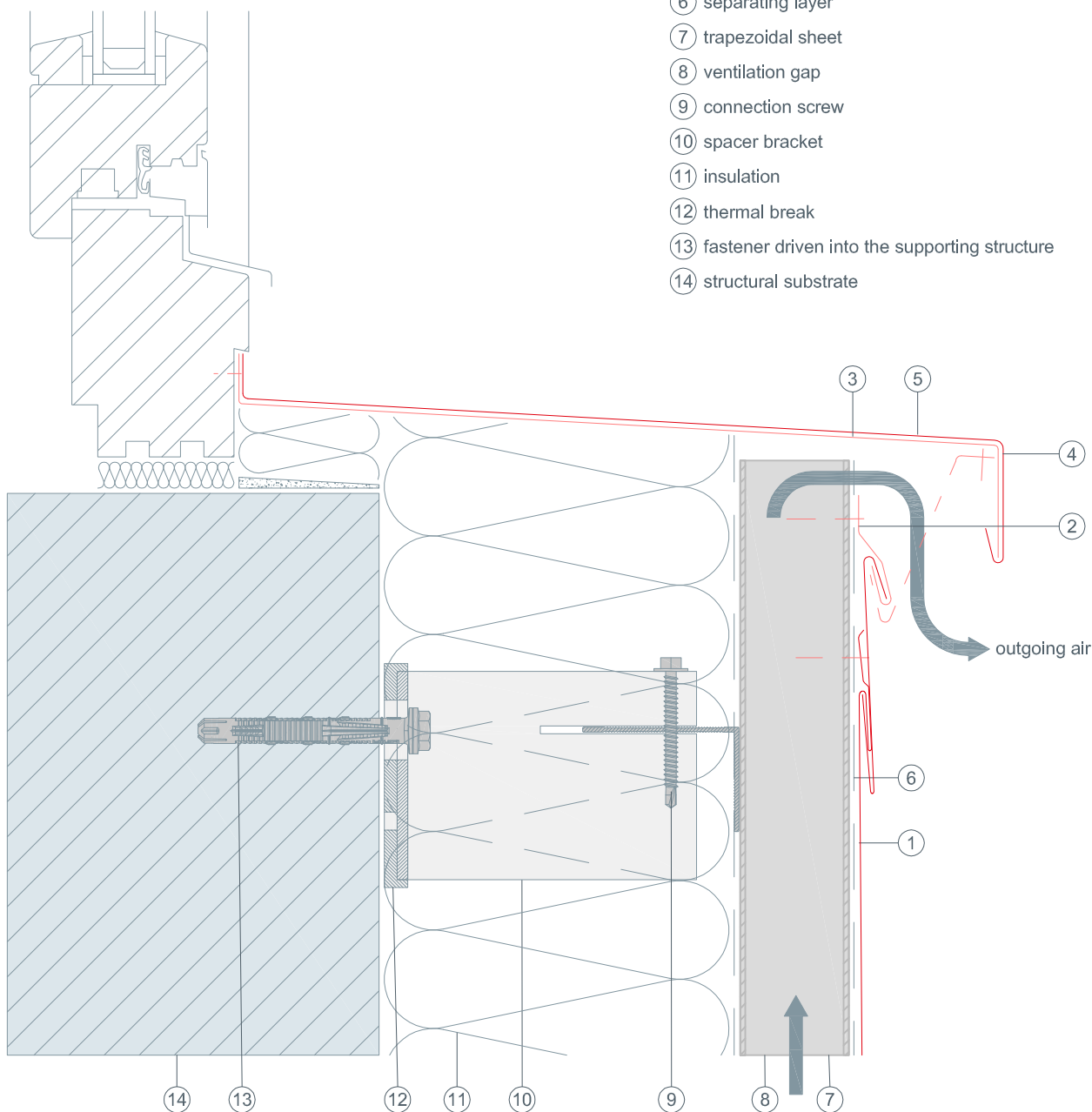




STARK WIE EIN STIER

# window ledge vertical cross-section RHOMBOID FAÇADE TILE 44 x 44 (PREFA)

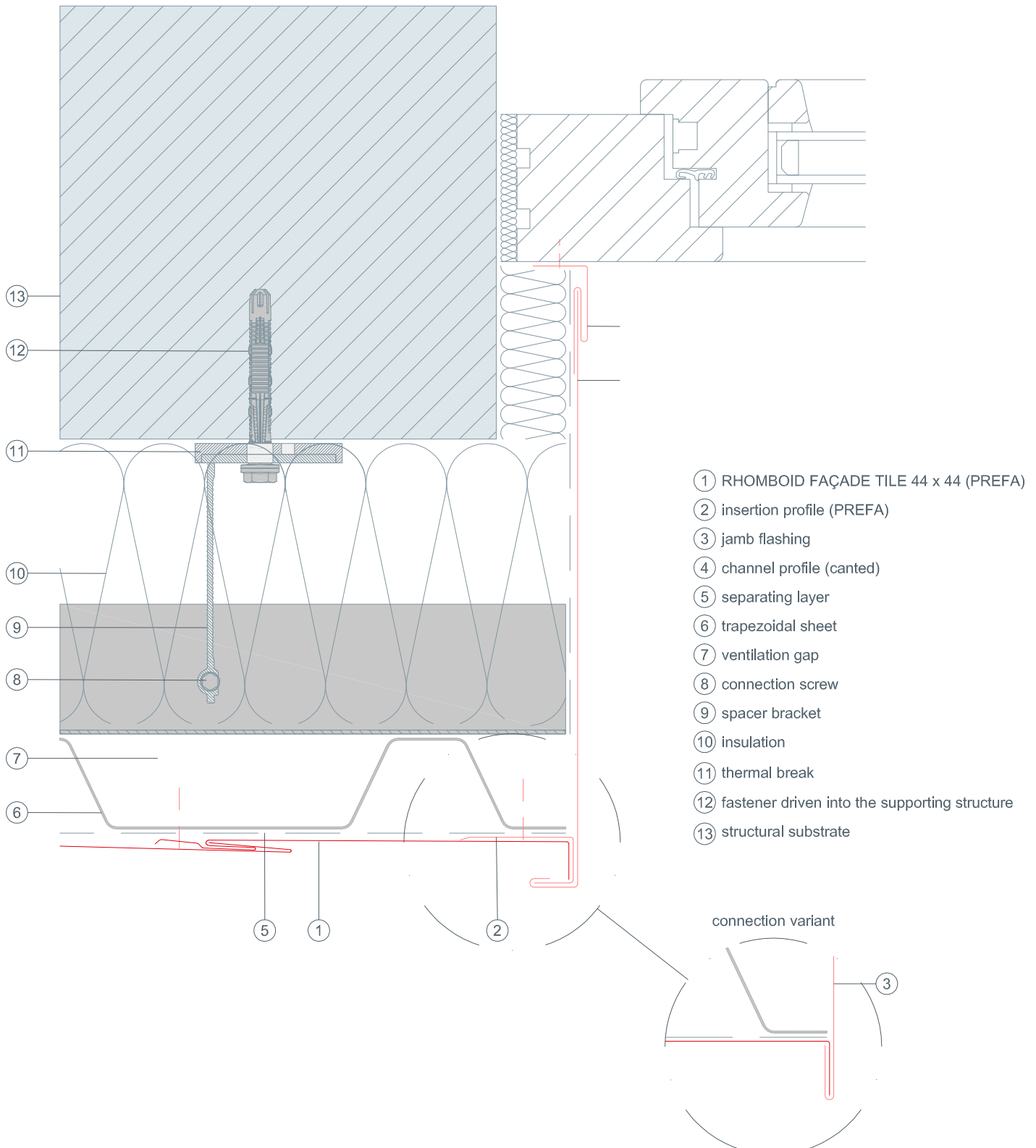
- ① RHOMBOID FAÇADE TILE 44 x 44 (PREFA)
- ② clips
- ③ continuous pre-formed supporting flashing strip
- ④ perforated metal plate (canted)
- ⑤ window ledge
- ⑥ separating layer
- ⑦ trapezoidal sheet
- ⑧ ventilation gap
- ⑨ connection screw
- ⑩ spacer bracket
- ⑪ insulation
- ⑫ thermal break
- ⑬ fastener driven into the supporting structure
- ⑭ structural substrate





STARK WIE EIN STIER

# window reveals horizontal cross-section RHOMBOID FAÇADE TILE 44 x 44 (PREFA)

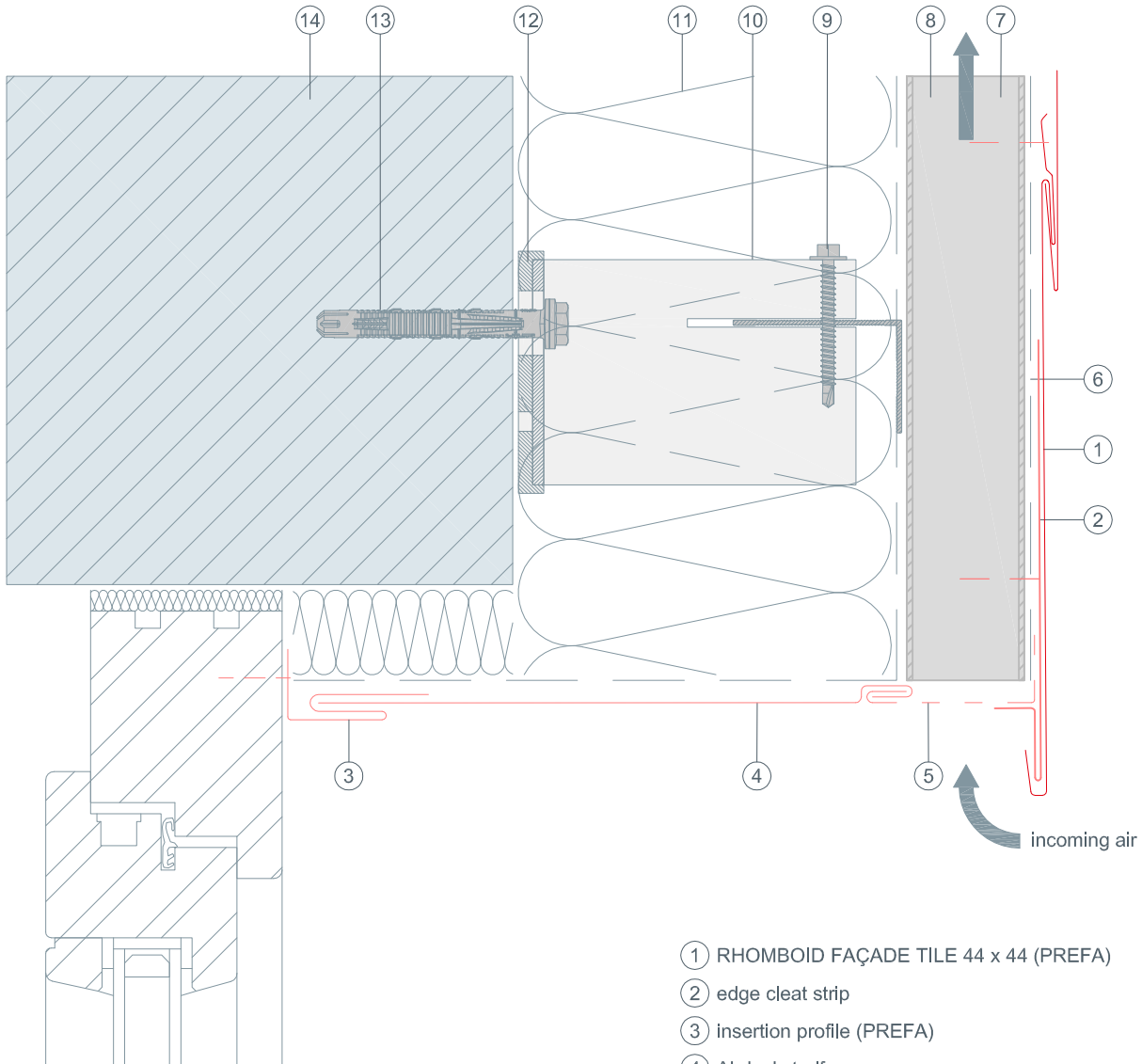




STARK WIE EIN STIER

# window lintel vertical cross-section RHOMBOID FAÇADE TILE 44 x 44 (PREFA)

## CAD DETAILS



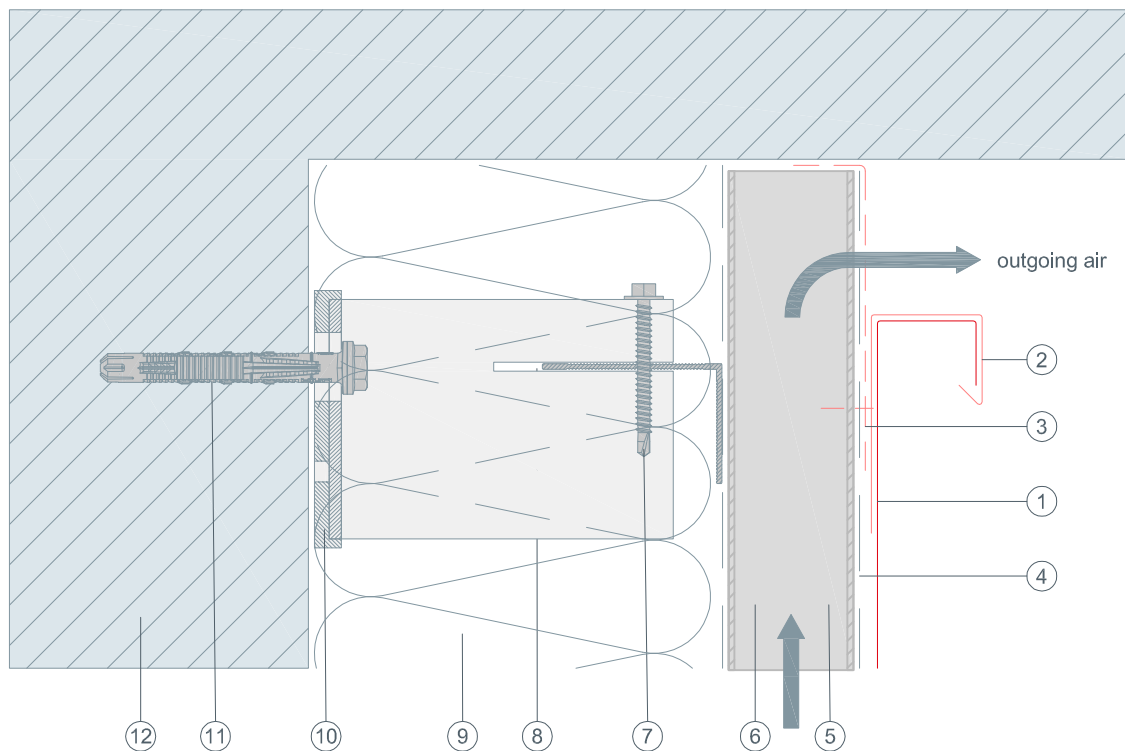
- ① RHOMBOID FAÇADE TILE 44 x 44 (PREFA)
- ② edge cleat strip
- ③ insertion profile (PREFA)
- ④ Abdeckstreifen
- ⑤ perforated metal plate (canted)
- ⑥ separating layer
- ⑦ trapezoidal sheet
- ⑧ ventilation gap
- ⑨ connection screw
- ⑩ spacer bracket
- ⑪ insulation
- ⑫ thermal break
- ⑬ fastener driven into the supporting structure
- ⑭ structural substrate



STARK WIE EIN STIER

# top connection vertical cross-section RHOMBOID FAÇADE TILE 44 x 44 (PREFA)

## CAD DETAILS



- ① RHOMBOID FAÇADE TILE 44 x 44 (PREFA)
- ② channel profile (canted)
- ③ perforated metal plate (canted)
- ④ separating layer
- ⑤ trapezoidal sheet
- ⑥ ventilation gap
- ⑦ connection screw
- ⑧ spacer bracket
- ⑨ insulation
- ⑩ thermal break
- ⑪ fastener driven into the supporting structure
- ⑫ structural substrate



STARK WIE EIN STIER

# roof parapet vertical cross-section RHOMBOID FAÇADE TILE 44 X 44 (PREFA)

CAD DETAILS

