



THE ROOF  
AS STRONG AS A BULL!

# THE PREFA PARTNER PACKAGE

ADVERTISING MATERIALS AND PROMOTIONS  
FOR SUCCESSFUL ROOF PROFESSIONALS

 2018 ISSUE UK

**ORDER  
NOW!**



## 10 GOOD REASONS FOR CHOOSING PREFA

- ! STORM-PROOF
- ! RUST-PROOF
- ! BREAK-PROOF
- ! LIGHT
- ! BEAUTIFUL
- ! COLOUR-FAST SURFACE
- ! GREAT FOR RENOVATIONS
- ! COMPLETE SYSTEM
- ! ENVIRONMENTALLY FRIENDLY
- ! 40-YEAR GUARANTEE



## POWERFUL CONTENT

- 04-05 **POWERFUL ADVERTISING: THERE'S NO IGNORING YOU**
- 06-07 **CUSTOMISED OUTDOOR ADVERTISING**
- 08-09 **THE BEST PRODUCTS AT A GLANCE**
- 10-11 **EXPERIENCE THE WORLD OF PREFA UP CLOSE**
- 12 **COMPREHENSIVE BROCHURES**
- 13 **GUARANTEE CERTIFICATE**
- 14-15 **REACH A WIDE AUDIENCE AND MAKE A STRONG IMPACT**
- 16 **HIGHLY COMMUNICATIVE ATTACHMENTS**
- 17 **PREFA GRAPHICS DEPARTMENT**
- 18-19 **SIMPLY APPEALING!**
- 20-22 **ATTENTION-GRABBING EYE-CATCHERS**
- 24-25 **PREFA RENTAL AGREEMENTS**
- 26 **PREFA SERVICES**
- 27 **PREFA CONTACT**

## SIMPLY STRONG TOGETHER

### BENEFIT NOW FROM ALL THE ADVANTAGES OF A GOOD PARTNERSHIP. STRENGTHEN YOUR POSITION WITH THE PREFA PARTNER PACKAGE.

The PREFA partner package is a vital key to success! You decide according to your own requirements and possibilities which parts of the package you would like to use for your company. We invite you to take the next step now with PREFA to increase your sales and market share. Simply strong together!

### ALWAYS IN THE PICTURE WITH PREFA BRAND ADVERTISING

As a PREFA partner, you can benefit directly from the comprehensive advertising campaigns with which PREFA regularly boosts the high level of brand awareness, and effectively communicates all the main advantages of your PREFA products. TV, radio or billboards: with PREFA as your partner, your proposal is always in the picture, and you are part of the best-known roofing brand.

All prices are net, excluding VAT and the items are subject to availability.

# POWERFUL ADVERTISING: THERE'S NO IGNORING YOU

## SEND OUT A CLEAR SIGNAL FOR YOUR SUCCESS

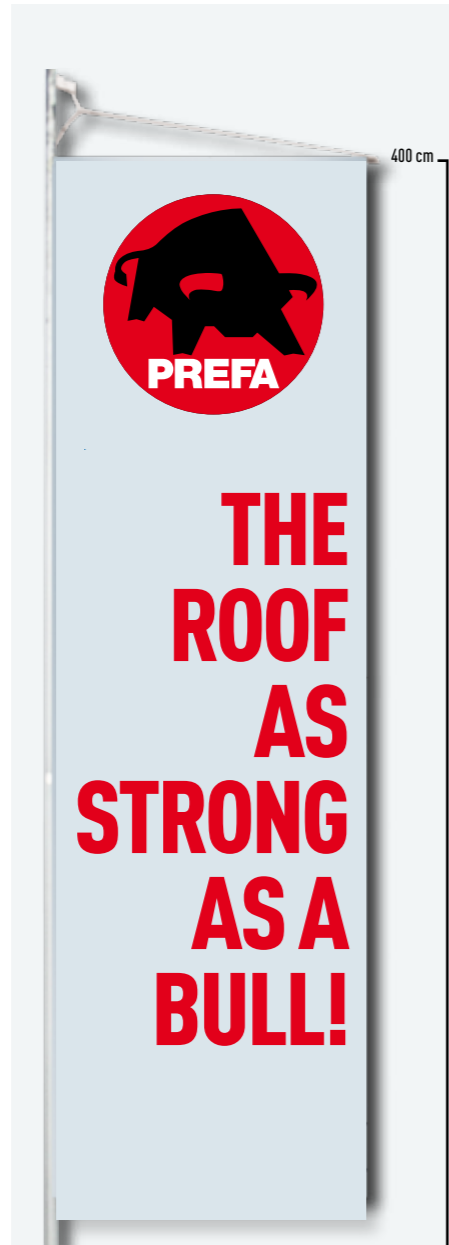
Draw attention to your business: display your powerful presence at the construction site with PREFA's outdoor advertising products.



### BEACH FLAG

Available in two different sizes:  
Height 350 cm or 270 cm  
With fastening spike or stand for indoors and outdoors.

Price: £ 95.00 (beach flag S)  
Price: £ 106.00 (beach flag M)



### FLAG

Format: 120 x 400 cm  
Suitable for use with or without hoist arm.

Price: £ 24.00



### LUMINOUS SIGN

80 cm diameter  
Single- or double-sided  
With additional panel (640 x 250 mm) on request.

Price: £ 268.00 (double-sided)  
Price: £ 159.00 (single-sided)  
Price: £ 143.00 (additional panel)



PVC with eyelets

### TRANSPARENT BANNER

4,000 x 1,000 mm  
PVC or mesh material with eyelets

Price: £ 58.00

# CUSTOMISED OUTDOOR ADVERTISING

**ANYONE LOOKING FOR QUALITY WILL FIND IT HERE.**

Combine the high image value of the PREFA brand with your company name, and draw your target group's attention directly to your own company.

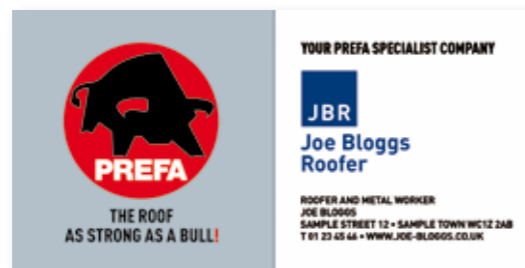


Size: 400 × 100 cm

## CUSTOMISED TRANSPARENT

Size according to requirements, ideal for site fences or scaffolding, PVC or transparent mesh material, with PREFA design.

Price: £ 47.00 (transparent 2 × 1 m)\*  
Price: £ 76.00 (transparent 4 × 1 m)\*

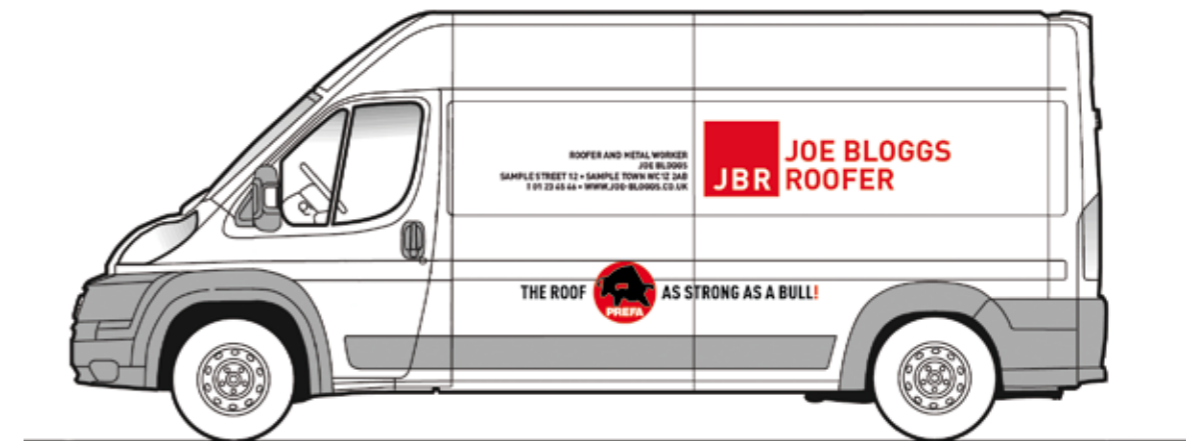


Size: 200 × 100 cm

## CONSTRUCTION SITE PANEL

100 × 66 cm  
Pre-printed with space for customised design, PVC.

Price: £ 24.00\*



## CUSTOMISED WORDING

Customise your utility vehicles with large-format photo montages, wording and the PREFA logo.

## CUSTOMISED WORDING PROCEDURE

Here are some examples of customised wording.

We would be delighted to advise you!

1. The roofer requests offers for stickers and has an initial draft of the graphics drawn up.
2. PREFA approves use of the logo, and PREFA's contribution towards the cost is clarified.
3. The roofer places an order and settles up with the local supplier.
4. PREFA provides a credit note for materials against production of photos and a copy of the invoice.

\* Price on request for orders for large quantities!

# THE BEST PRODUCTS AT A GLANCE

## SHOW YOUR CUSTOMERS YOUR STRONGEST SALES ARGUMENTS.

In sales, it's often the first impression that counts! Today, customers seek expert advice and wish to be informed very quickly about the products' advantages: be competently prepared and present information in a high-quality way.



Reverse

### ROLL-UPS

Themes available:  
Roof or façade systems, PREFA logo, PREFA innovation, gutters or flood protection systems.  
Delivered with bag, ideal for indoor use. Size: 80 × 200 cm.

Price: € 89.00



### RETAINING TAPE

PREFA retaining tape, 2 m in length with strip fastener, perfect for attaching coils/strips.

Price: € 2.10



### USB STICK

Practical USB memory device for storing reference photos and information material.

Price: € 4.00



### ROUND STICKERS

Self-adhesive, available in 4 sizes:  
Ø 30 cm, Ø 25 cm, Ø 4 cm

On a white or transparent background.  
Available in 2 sizes:  
50 × 30 cm, 15 × 10 cm



### COUNTER STANDS FOR BROCHURES

Height 26 cm,  
1 compartment for A4 format brochures,  
Supplied in a box.

Price: € 41.00



### BROCHURE STANDS

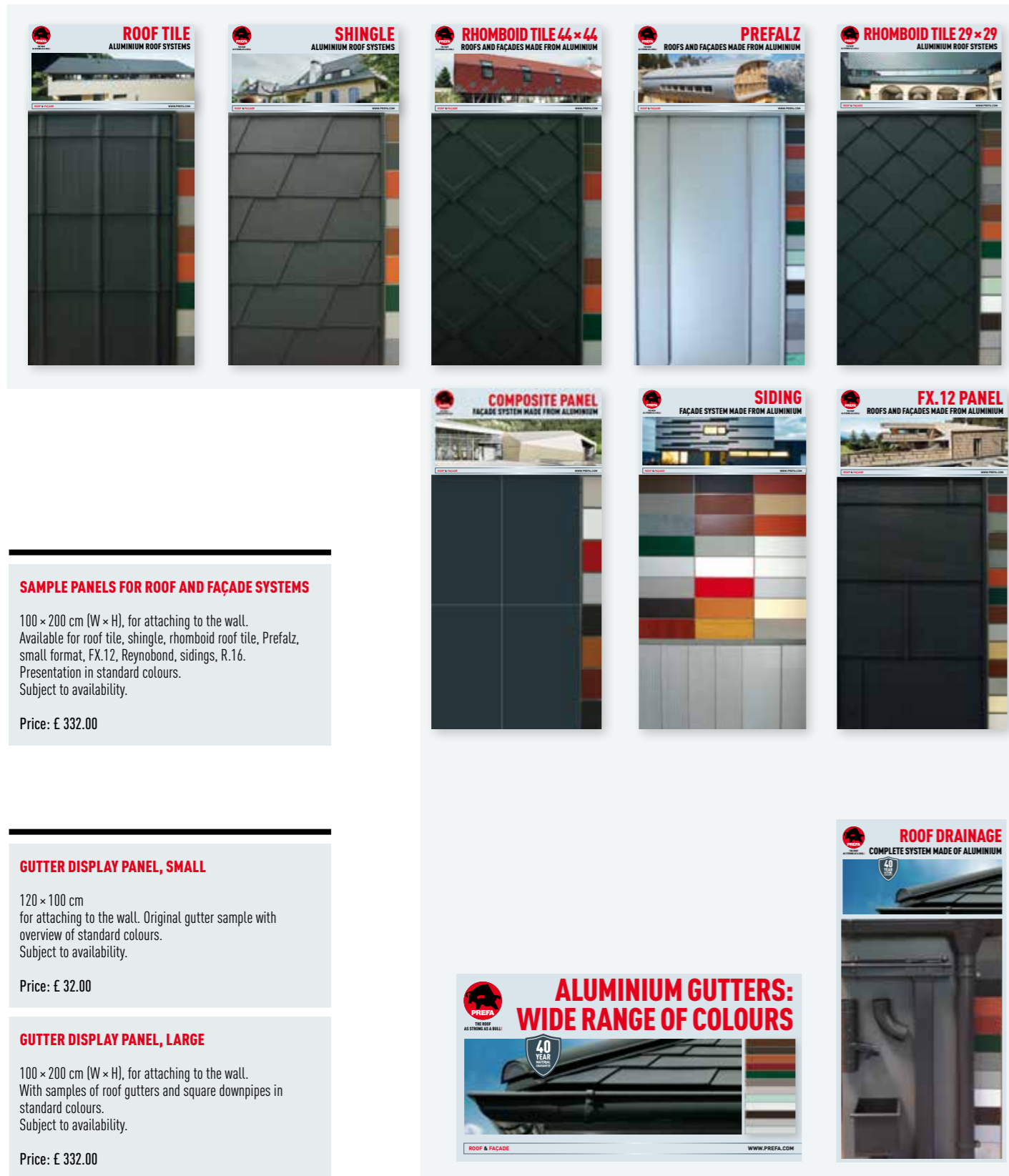
Height 170 cm,  
3 compartments for A4 format brochures,  
Supplied disassembled in a box.

Price: € 187.00

# EXPERIENCE THE WORLD OF PREFA UP CLOSE

## SAMPLES, MATERIALS AND COLOURS: PREFA LIVE.

Sample panels and stands: colour fans and hand samples of PREFA products enable your customers to touch and see the roof and façade surfaces in person, making their purchasing decision easier.



### SAMPLE PANELS FOR ROOF AND FAÇADE SYSTEMS

100 × 200 cm (W × H), for attaching to the wall. Available for roof tile, shingle, rhomboid roof tile, Prefalz, small format, FX.12, Reynobond, sidings, R.16. Presentation in standard colours. Subject to availability.

Price: £ 332.00

### GUTTER DISPLAY PANEL, SMALL

120 × 100 cm for attaching to the wall. Original gutter sample with overview of standard colours. Subject to availability.

Price: £ 32.00

### GUTTER DISPLAY PANEL, LARGE

100 × 200 cm (W × H), for attaching to the wall. With samples of roof gutters and square downpipes in standard colours. Subject to availability.

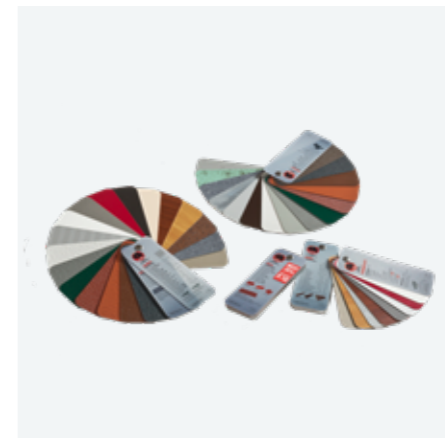
Price: £ 332.00



### COLOUR FAN BOX

Contains five colour fans with all PREFA product colours.

Price: £ 27.00



### COLOUR FANS

Available for: Roof covering, Prefalz, gutter, aluminium composite panel and siding, with all standard colours.

Price: £ 5.00



### COLOUR SAMPLE

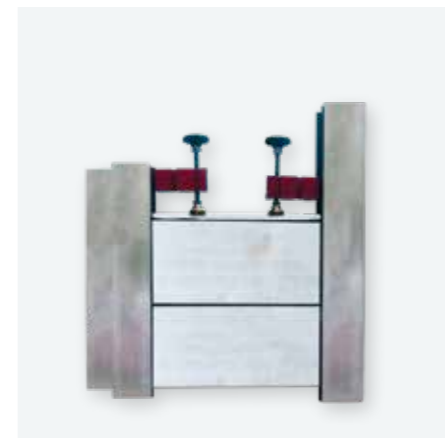
A5 sample sheet with envelope. Colour and surface according to requirement.



### FLOOD PROTECTION SOLUTIONS

Exhibition sample, provided on loan. Delivered by truck on a pallet. Only available on request. Delivery time: 5 working days.

Price: £ 1,449.00



### FLOOD PROTECTION SOLUTION SAMPLES

All components for on-site presentation. Available in dimensions 50 and 80. Available on request!

Price: £ 198.00



# COMPREHENSIVE BROCHURES

## COMPETENTLY PREPARED FOR YOUR CUSTOMERS.

Make use of the wide range of brochures and printed matter when advising your customers. Substantiate your high claims for the unparalleled quality characteristics of PREFA products with the corresponding PREFA guarantee certificates.

# 100% ALUMINIUM – 40 YEARS WARRANTY

## ALUMINIUM DEMONSTRATES LIFE-LONG QUALITY

**STORM-PROOF! RUST-PROOF! BREAK-PROOF!**  
PREFA aluminium roofs and façades are quality products made in Austria and Germany and should only be professionally installed by specialist companies. That's why we're able to provide a 40-year guarantee with a clear conscience!

**SEND YOUR REQUEST CARD NOW!**  
SEND YOUR REQUEST CARD BY POST, FAX OR EMAIL, OR FILL IN OUR ONLINE FORM AT [PREFA.COM/GUARANTEE](http://PREFA.COM/GUARANTEE)



## GUARANTEE CERTIFICATE REQUEST CARD

IF NO STAMP ATTACHED, RECIPIENT SHALL PAY POSTAGE.

### TO BE FILLED OUT BY THE CUSTOMER

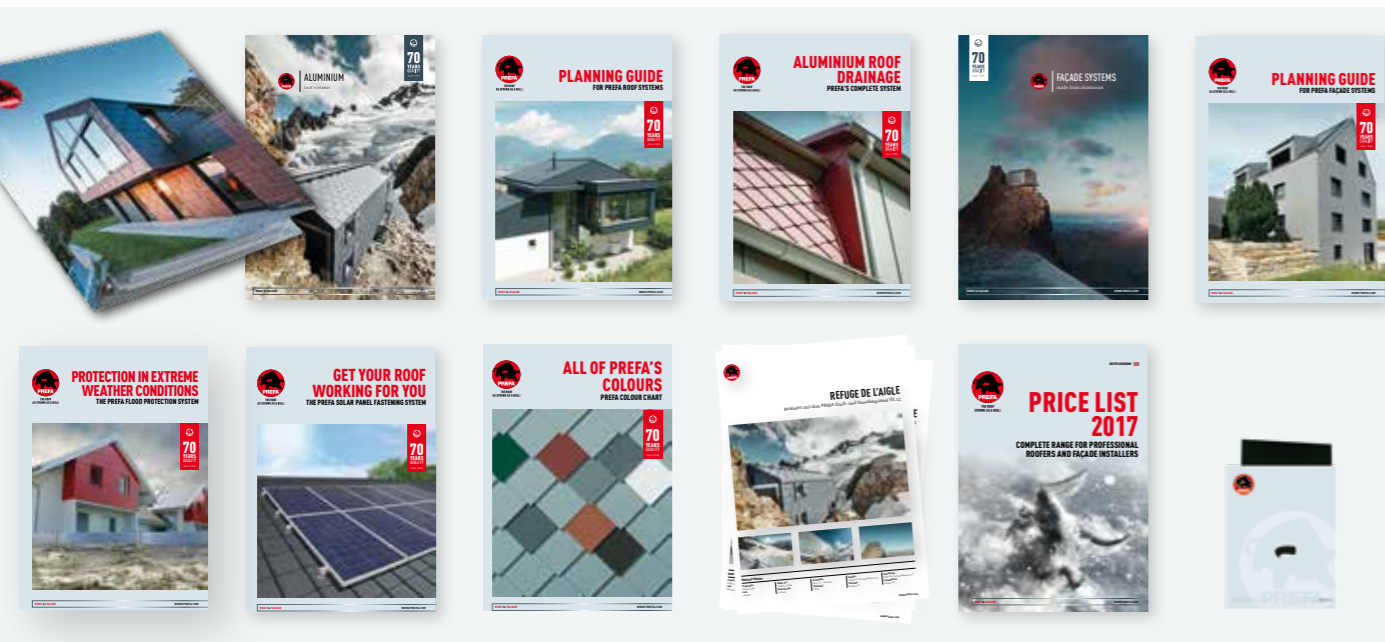
Title/First name/Surname: \_\_\_\_\_ Does your project involve  
 a renovation **or**  a new build?  
Address: \_\_\_\_\_ Year of birth \_\_\_\_\_  
City / Postcode: \_\_\_\_\_ How did you hear about PREFA?  
 Friend  Metalworker  Newspaper  
 TV  Radio  Internet  
 Trade fair  Other: \_\_\_\_\_  
Phone: \_\_\_\_\_ Will you recommend PREFA to others?  
Email: \_\_\_\_\_  yes  no

### TO BE FILLED IN BY SPECIALIST COMPANY

Metal work specialist company: \_\_\_\_\_  
Installation date: \_\_\_\_\_  
Product:  
 roof tile  R.16 roof tile  shingle  rhomboid roof tile 29 × 29  rhomboid roof tile 44 × 44  
 FX.12 roof panel  Prefalz  siding  roof drainage (gutter, downpipe)  façade shingle  
 rhomboid façade tile 20 × 20  rhomboid façade tile 29 × 29  rhomboid façade tile 44 × 44  
 FX.12 façade panel  
Colour: \_\_\_\_\_ Quantity in m<sup>2</sup>: \_\_\_\_\_  
Surface:  P.10  smooth  stucco

STAMP OF METAL WORK SPECIALIST COMPANY

PREFA Aluminiumprodukte GmbH  
Customer service centre  
Werkstraße 1  
3182 MARKTL/LILIENFELD  
AUSTRIA



### ROOFER AND CONTRACTOR FOLDER

With A4 format brochures, reference sheets and A5 colour sample.

Price: € 32.00



### INSTALLATION INSTRUCTIONS

Installation instructions in A6 format, available for:  
• PREFA roof systems  
• PREFA façade systems

Price: € 3.00



### PROPOSAL FOLDER

Present your PREFA proposal with your business card in the high-quality A4 paper folder.

Price: € 1.00



# REACH A WIDE AUDIENCE AND MAKE A STRONG IMPACT

## YOUR CUSTOMISED PREFA ADVERTS.

Targeted advertising with adverts in selected regional media boosts awareness of your company in your trading area: adverts professionally designed by PREFA and produced with your company logo.

### CUSTOMISABLE ADVERTS WITH YOUR LOGO

Illustrated examples, adverts in landscape or portrait format.

### CUSTOMISABLE ADVERTS WITH YOUR LOGO

Illustrated examples, adverts in landscape or portrait format.

**MORE ON PAGE 17!**



THE ROOF AS STRONG AS A BULL!

## LOW WEIGHT, HIGH IMPACT: SAVE TIME AND MONEY WITH A PREFA ALUMINIUM ROOF

SPACE FOR YOUR  
INDIVIDUAL  
COMPANY LOGO



DISCOVER EVEN MORE EXAMPLES OF RENOVATIONS AT [WWW.PREFA.COM](http://WWW.PREFA.COM)

100% aluminium. 40-year guarantee. Now available from your metalwork specialist company.

\* The colour guarantee ensures that the painted surface is protected from chips and blistering under the terms specified in the guarantee certificate. You can find more information about the material and colour guarantee at [www.prefa.com/Guarantee](http://www.prefa.com/Guarantee)

ROOF & FAÇADE

[WWW.PREFA.COM](http://WWW.PREFA.COM)



THE ROOF AS STRONG AS A BULL!

## THE COMPLETE SYSTEM MADE OF ALUMINIUM ENABLES PERFECT INTERACTION BETWEEN ROOF, GUTTERS AND FAÇADES

SPACE FOR YOUR  
INDIVIDUAL  
COMPANY LOGO



100% aluminium. 40-year guarantee. Now available from your metalwork specialist company.

\* The colour guarantee ensures that the painted surface is protected from chips and blistering under the terms specified in the guarantee certificate. You can find more information about the material and colour guarantee at [www.prefa.com/Guarantee](http://www.prefa.com/Guarantee)

ROOF & FAÇADE

[WWW.PREFA.COM](http://WWW.PREFA.COM)



THE ROOF AS STRONG AS A BULL!

## GREAT FOR RENOVATIONS LOW WEIGHT, HIGH IMPACT: SAVE TIME AND MONEY WITH A PREFA ALUMINIUM ROOF

SPACE FOR YOUR  
INDIVIDUAL  
COMPANY LOGO



100% aluminium. 40-year guarantee. Now available from your metalwork specialist company.

\* The colour guarantee ensures that the painted surface is protected from chips and blistering under the terms specified in the guarantee certificate. You can find more information about the material and colour guarantee at [www.prefa.com/Guarantee](http://www.prefa.com/Guarantee)

ROOF & FAÇADE

[WWW.PREFA.COM](http://WWW.PREFA.COM)



THE ROOF AS STRONG AS A BULL!

## FAÇADE SHINGLE ATTRACTIVE AND WEATHERPROOF: FOR BOTH MODERN AND TRADITIONAL STRUCTURES



Product: PREFA facade shingle  
Colour: light grey P10  
Location: Ebenbach, Austria  
Installed by: Metalwork  
and metalworkers  
Architect: J. Althoff

SPACE FOR YOUR  
INDIVIDUAL COMPANY LOGO

100% aluminium. 40-year guarantee.  
Now available from your metalwork specialist company.

ROOF & FAÇADE

[WWW.PREFA.COM](http://WWW.PREFA.COM)



THE ROOF AS STRONG AS A BULL!

## FAÇADE SHINGLE ATTRACTIVE AND WEATHERPROOF: FOR BOTH MODERN AND TRADITIONAL STRUCTURES



Product: PREFA facade shingle  
Colour: light grey P10  
Location: Ebenbach, Austria  
Installed by: Metalwork  
and metalworkers  
Architect: J. Althoff

SPACE FOR YOUR  
INDIVIDUAL COMPANY LOGO

100% aluminium. 40-year guarantee.  
Now available from your metalwork specialist company.

ROOF & FAÇADE

[WWW.PREFA.COM](http://WWW.PREFA.COM)



THE ROOF AS STRONG AS A BULL!

## RENOVATION MADE EASY WITH PREFA!



### EXPERT TIP FROM ...

“What with leaves, rainwater, melted snow and ice, the roof and gutters have to put up with a lot. This is where time and money can be saved. A PREFA aluminium roof offers reliability for generations as the lightweight metal is corrosion-resistant and break-proof.

The aluminium roof is up to ten times lighter than a traditional tile roof. The low dead weight of 2.3 to 2.6 kg/m<sup>2</sup> reduces demands on structural engineering and on the substructure.

And PREFA roof and façade systems really stand out with their diverse design possibilities. PREFA offers a 40-year guarantee on materials and colours.”

JOE BLOGGS ROOFER

ROOF & FAÇADE

[WWW.PREFA.COM](http://WWW.PREFA.COM)





# HIGHLY COMMUNICATIVE ATTACHMENTS

## PROMOTE YOUR COMPANY WITH PREFA

From product brochures, leaflets and direct mail to posters or business cards, PREFA's free graphics service is available on request.

**PREFA'S COMPLETE SYSTEM**  
ENABLES PERFECT INTERACTION BETWEEN ROOF, GUTTERS AND FAÇADES

40 YEAR GUARANTEE

SPACE FOR YOUR INDIVIDUAL COMPANY LOGO

ONE OF TEN GOOD REASONS TO CHOOSE PREFA  
Everything that a building owner needs from one source—all supplied by PREFA, the specialist in strong, tough, high-quality roof drainage systems, facades and solar solutions. With over 4,000 different aluminium products, we offer you the ideal complete solution for creative and comprehensive roof and facade design from one source.  
100% aluminium, 40-year guarantee. Now available from your network specialist company.

ROOF & FAÇADE WWW.PREFA.COM

**10 GOOD REASONS FOR CHOOSING PREFA**  
ROOF AND FAÇADE SYSTEMS

- STORM-PROOF
- RUST-PROOF
- BREAK-PROOF
- LIGHT
- BEAUTIFUL
- COLOR-FAST SURFACE
- GREAT FOR RENOVATIONS
- COMPLETE SYSTEM
- ENVIRONMENTALLY FRIENDLY
- 40-YEAR GUARANTEE

40 YEAR GUARANTEE

SPACE FOR YOUR INDIVIDUAL COMPANY LOGO

ONE OF TEN GOOD REASONS TO CHOOSE PREFA  
Everything that a building owner needs from one source—all supplied by PREFA, the specialist in strong, tough, high-quality roof drainage systems, facades and solar solutions. With over 4,000 different aluminium products, we offer you the ideal complete solution for creative and comprehensive roof and facade design from one source.  
100% aluminium, 40-year guarantee. Now available from your network specialist company.

ROOF & FAÇADE WWW.PREFA.COM

**NO NEED TO PAINT**  
PREFA FAÇADE SYSTEMS WITH A WOODEN APPEARANCE

40 YEAR GUARANTEE

SPACE FOR YOUR INDIVIDUAL COMPANY LOGO

ONE OF TEN GOOD REASONS TO CHOOSE PREFA  
PREFA has developed a special wooden appearance for its facades to combine the qualitative benefits of aluminium with the traditional design of wooden cladding. No repainting or maintenance required! PREFA's offerings are available in over 1000 colors and many other standard colors. Contact your roof and facade professional for information and advice! 100% aluminium, 40-year guarantee.

ROOF & FAÇADE WWW.PREFA.COM

**PREFA CLOSE TO YOU**  
GET YOUR NO OBLIGATION CONSULTATION TODAY

CHOOSE PREFA NOW!

SPACE FOR YOUR INDIVIDUAL COMPANY LOGO

WE WOULD BE DELIGHTED TO ADVISE YOU — UNDER NO OBLIGATION OF COURSE!  
PREFA roofs and facades are made of high-quality aluminium. No other material can offer so many advantages: aluminium lightweight, break-proof, suitable with very little effort, and its sustainability saving and long-term. The extensive product range offers many different application possibilities for roof and facade design. To ensure the successful implementation of any idea, no matter how unusual, we would be delighted to advise you already during the planning phase of your new build or renovation project. Call us or write us an email.

ROOF & FAÇADE WWW.PREFA.COM

**AT A GLANCE**  
THE PREFA PRODUCT RANGE

<b>PREFA ROOF TILE</b> FOR ROOFS WITH SLOPE Size: 400 x 420 mm (30mm)	<b>PREFA ALUMINIUM COMPOSITE PANEL</b> FOR FACADES Size: 0.7 x 1.86 x 1.00 1.2 x 2.00 x 1.00 1.2 x 2.00 x 1.00 up to 40,200 mm
<b>PREFA ROOF AND FAÇADE GUTTER</b> FOR ROOFS AND FACADES Size: 420 x 1.200 mm (30mm)	<b>PREFA FACADES</b> Size: 1.200 x 4.010 x 4.0 mm
<b>PREFA ROOFING FACADE TILE 28 x 28</b> FOR FACADES Size: 280 x 280 mm	<b>PREFA PROFILE</b> FOR ROOFS Size: 0.7 x 500 mm, 0.7 x 400 mm
<b>PREFA ROOFING FACADE TILE 29 x 29</b> FOR FACADES Size: 290 x 290 mm	<b>PREFA FACADES</b> Size: 0.7 x 500 mm
<b>PREFA 12 ROOF AND FAÇADE PANEL</b> FOR ROOFS AND FACADES Size: 700 x 420 mm and 4.000 x 4.000 mm	<b>PREFA BUZZLE PROFILE</b> FOR FACADES Size: 0.7 x 500 mm
<b>ROOF DRAINAGE COMPLETE SYSTEM</b> SEPARATE COMPONENTS FOR ROOFS AND FACADES Gutters, downpipes, and roof gutters	<b>PREFA SOLAR PANEL FASTENING SYSTEM AND ACCESSORIES</b>
<b>PREFA SQUARE</b> SEPARATE COMPONENTS FOR ROOFS AND FACADES Dimensions: 100 x 120 mm	

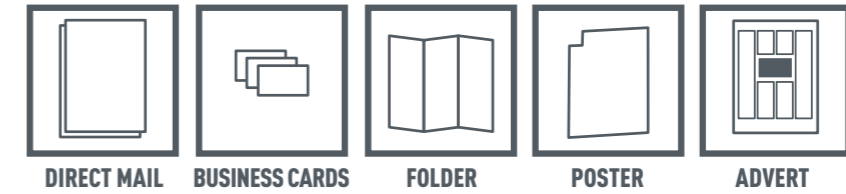
ROOF & FAÇADE WWW.PREFA.COM

## PREFA GRAPHICS DEPARTMENT

Make use of PREFA's graphics department

For example, layouts for posters, adverts, printed matter and direct mails with the PREFA logo and your company logo are available on request.

For more information, contact your competent PREFA specialist adviser (see page 23).



## PREFA ADVERTISING DEPARTMENT

Profit from special conditions and combined discounts through our central ordering service. We will be delighted to create your individual media plan with a statement of costs. PREFA's contribution towards the cost must be agreed in advance with your specialist adviser. Please allow for a lead time of approx. 14 working days.

We require:

- Required media: newspaper, magazine
- Regional edition
- Date of publication
- Format
- Logo data as a vector graphics image in printable quality
- You can also send us a high-resolution photo of the required image.



### CUSTOMISABLE DIRECT MAIL

Illustrated examples of direct mail.  
The pages can be individually laid out and designed.  
Size: A4 (210 x 297 mm); printed on both sides.

# SIMPLY APPEALING!

## HIGH-QUALITY TEXTILES.

Simply appealing: attractive clothing with the PREFA look underlines your company's good relationship with PREFA — and looks great too!



### T-SHIRT

Sizes: S-XXL

Price: £ 3.00



### POLO SHIRT

Sizes: S-XXL

Price: £ 9.00



### SWEATER JACKET

Sizes: S-XXL

Price: £ 20.00



### FLEECE WAISTCOAT

Sizes: S-XXL

Price: £ 17.00



### CAP

Black with embroidered logo at the front, one size fits all

Price: £ 3.00



### WOOLLY HAT

Fleece-lined, one size fits all

Price: £ 4.50



### RUBBER LABEL

for sewing onto textiles, Ø 9.2 cm, 50 cm², with a white border

Price: £ 1.00



### CYCLING OUTFIT (THREE-PART)

Set includes cycling shorts with padding, jersey and long-sleeved jacket, tight fitting, sizes: S-XXXL

Price of set: £ 107.00



## PLEASE NOTE

All prices apply exclusive of 20% VAT and do not include shipping costs. Subject to availability of items and sizes.

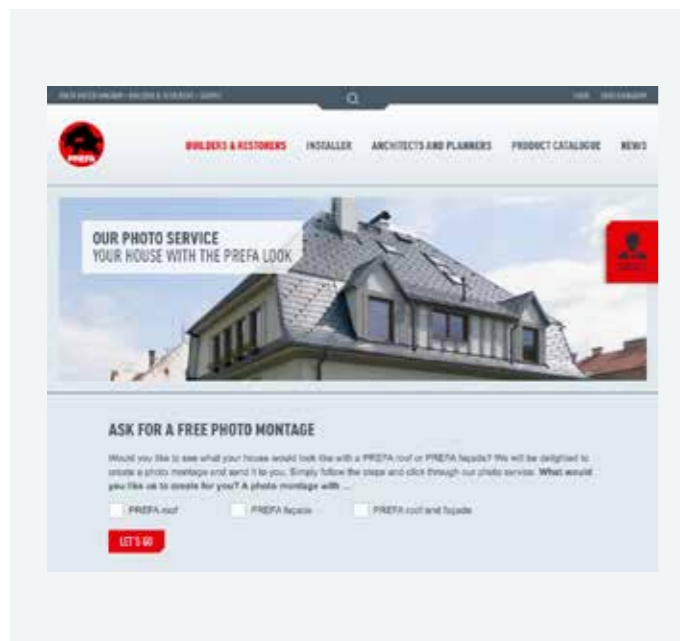


# PREFA SERVICES

TAKE ADVANTAGE OF OUR COMPREHENSIVE OFFERS.

## VISIT US AT WWW.PREFA.COM OR FIND US ON FACEBOOK AND LINKEDIN

PREFA website with a special area for roof professionals: technical details and useful information for downloading. In the general area: illustrations as a roofer partner with possibility to upload reference photos and enter your address.



### STRENGTHEN YOUR SALES ARGUMENTS WITH THE PREFA PHOTO SERVICE

Visit [www.prefa.com](http://www.prefa.com), where you can send us a photo of your roof or façade and within a few days, we'll email you a photo montage of the house covered with your required PREFA product.

**FIND ALL THE INFORMATION YOU NEED AT:**  
[WWW.PREFA.COM](http://WWW.PREFA.COM)  
[WWW.FACEBOOK.COM/PREFADACH](http://WWW.FACEBOOK.COM/PREFADACH)  
[WWW.LINKEDIN.COM/COMPANY/PREFA-GROUP/](http://WWW.LINKEDIN.COM/COMPANY/PREFA-GROUP/)

### ON-SITE TRAINING BY A PREFA ROOFING TRAINER

PREFA supports its roofing professionals with practical on-site instruction given by a roofing trainer. The instruction involves teaching the laying techniques for PREFA products, however, please note that the service does not provide support during assembly. For training purposes, the substructure (hips, ridges, valleys, skip sheathing/sheathing) must already have been completed.

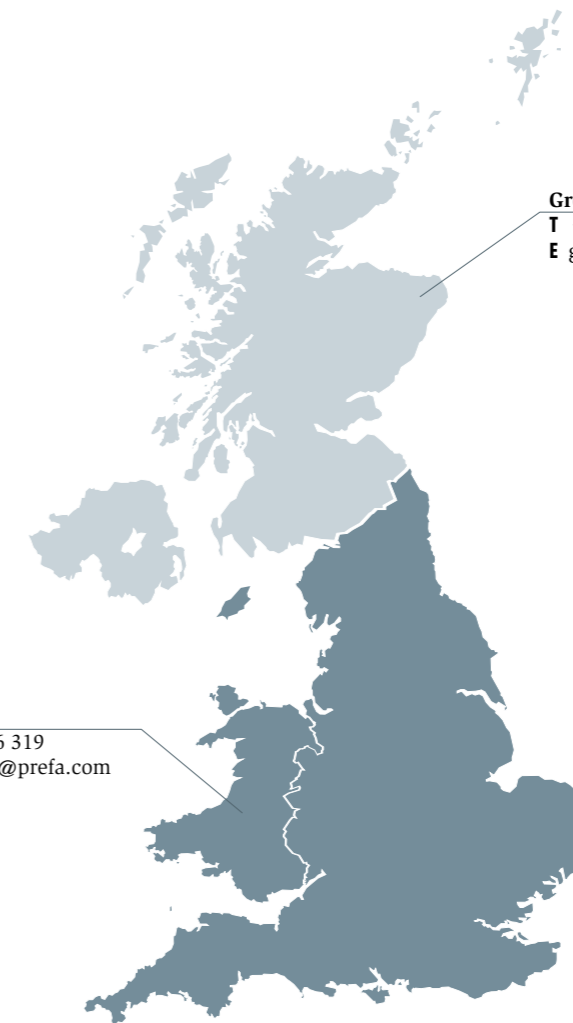
The service is intended to support you on-site as you professionally apply the theoretical and practical knowledge gained from the PREFA Academy.

**FIND ALL THE INFORMATION YOU NEED AT [WWW.PREFA.COM](http://WWW.PREFA.COM)**

# PREFA CONTACT

WE WILL BE GLAD TO ANSWER ANY QUESTIONS!

## YOUR SPECIALIST ADVISER



**Gregor Lang**  
T +44 7387 106 320  
E [gregor.lang@prefa.com](mailto:gregor.lang@prefa.com)

**Chris Murphy**  
T +44 7387 106 319  
E [chris.murphy@prefa.com](mailto:chris.murphy@prefa.com)

## PREFA SERVICE



**GREGOR WINKLER**  
Marketing & Sales International  
T +43 2762-502-836  
M +43 664 4338163  
E [gregor.winkler@prefa.com](mailto:gregor.winkler@prefa.com)



**THE ROOF  
AS STRONG AS A BULL!**

## THE PREFA GROUP

**AUSTRIA** 3182 Marktl/Lilienfeld  
T + 43 2762 502-0, E [office.at@prefa.com](mailto:office.at@prefa.com)

**GERMANY** 98634 Wasungen  
T + 49 36941 785-0, E [office.de@prefa.com](mailto:office.de@prefa.com)

**SWITZERLAND** 8800 Thalwil  
T + 41 71 952 68 19, E [office.ch@prefa.com](mailto:office.ch@prefa.com)

**ITALY** 39100 Bolzano  
T + 39 0471 068680, E [office.it@prefa.com](mailto:office.it@prefa.com)

**FRANCE** 73190 Challes-les-Eaux  
T + 33 4 79 44 84 58, E [office.fr@prefa.com](mailto:office.fr@prefa.com)

**THE CZECH REPUBLIC** 19300 Prague  
T + 420 234 496 501, E [office.cz@prefa.com](mailto:office.cz@prefa.com)

**HUNGARY** 2040 Budaörs  
T + 36 23 511-670, E [office.hu@prefa.com](mailto:office.hu@prefa.com)

**POLAND** 02-295 Warsaw  
T + 48 22 720 62 90, E [office.pl@prefa.com](mailto:office.pl@prefa.com)

**SWEDEN** 232 91 Arlöv  
T + 46 10 498 66 60, E [office.se@prefa.com](mailto:office.se@prefa.com)

**UK** W8 5HD London  
T + 44 20 7795 8124, E [office.uk@prefa.com](mailto:office.uk@prefa.com)

[www.prefa.com](http://www.prefa.com)

## 10 GOOD REASONS FOR CHOOSING PREFA

- ! **STORM-PROOF**
- ! **RUST-PROOF**
- ! **BREAK-PROOF**
- ! **LIGHT**
- ! **BEAUTIFUL**
- ! **COLOUR-FAST SURFACE**
- ! **GREAT FOR RENOVATIONS**
- ! **COMPLETE SYSTEM**
- ! **ENVIRONMENTALLY FRIENDLY**
- ! **40-YEAR GUARANTEE**



### THE PREFA GROUP IS REPRESENTED IN THE FOLLOWING COUNTRIES:

Austria, Germany, Switzerland, Italy, France, Belgium, the Netherlands, Luxembourg, Denmark, Sweden, Norway, the Czech Republic, Slovakia, Hungary, Poland, Slovenia, Croatia, Estonia, Latvia, Lithuania, Russia, Great Britain

\* The colour guarantee ensures that the painted surface is protected from chips and blistering under the terms specified in the guarantee certificate. You can find more information about the material and colour guarantee at [www.prefa.com/Guarantee](http://www.prefa.com/Guarantee)  
Subject to modifications and printing errors. Printed colours may vary from the original material. 01/2018 | MF